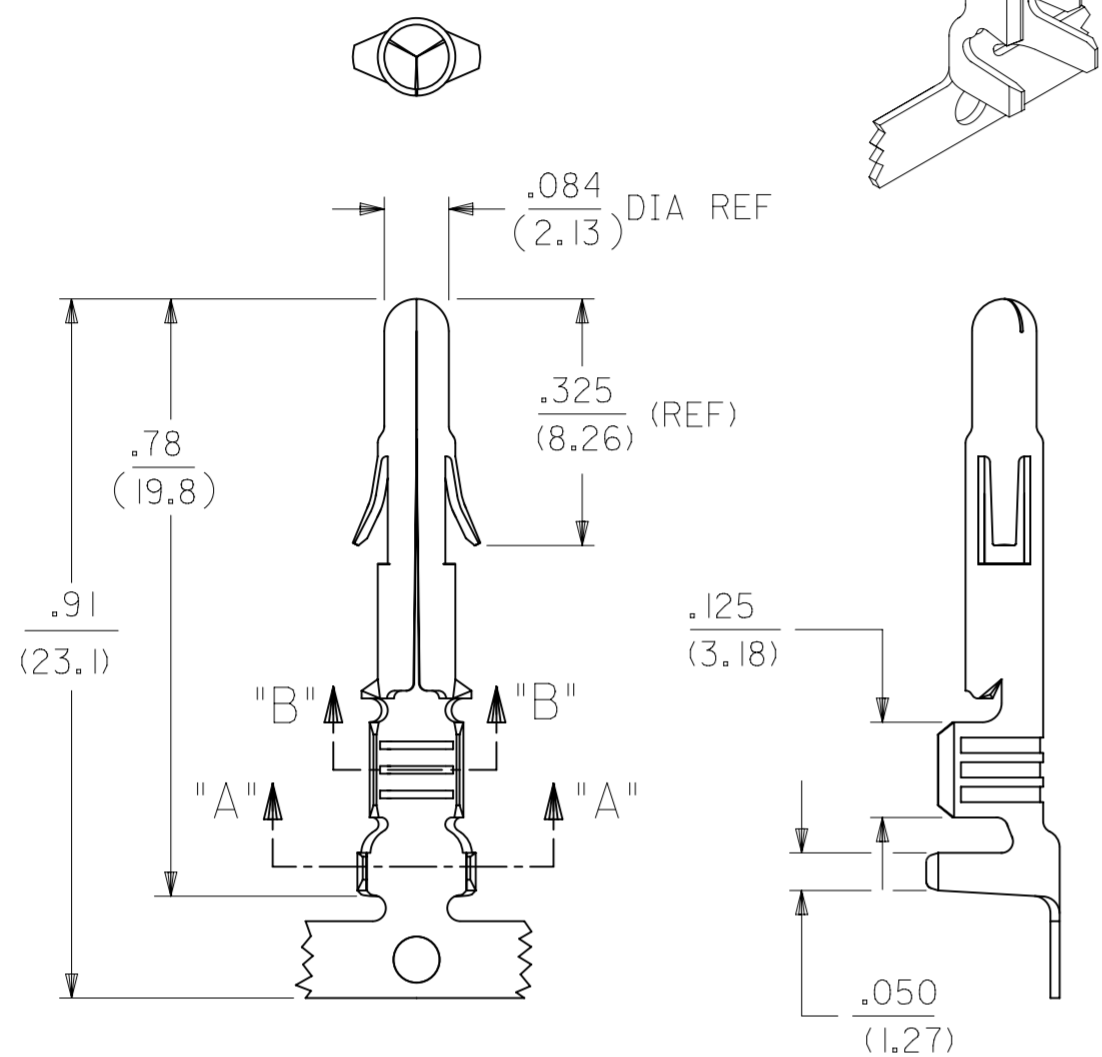
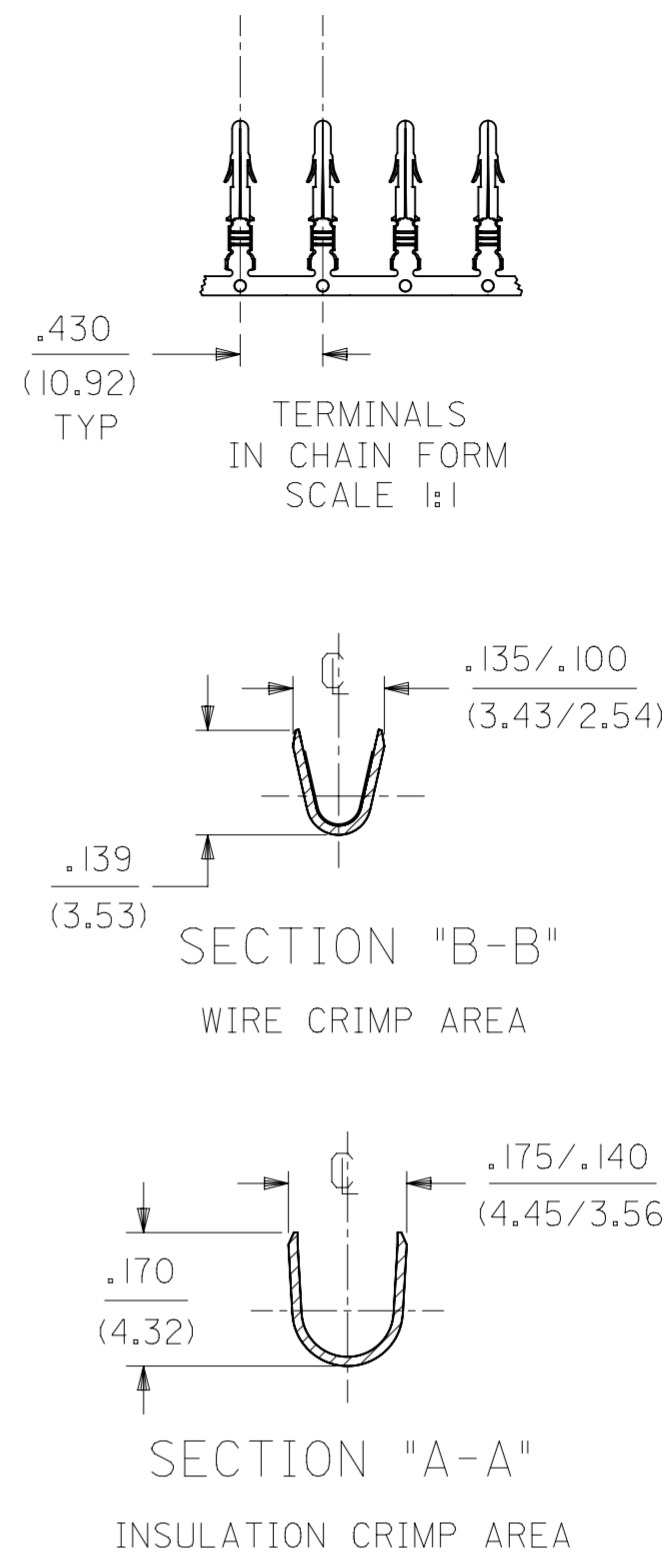
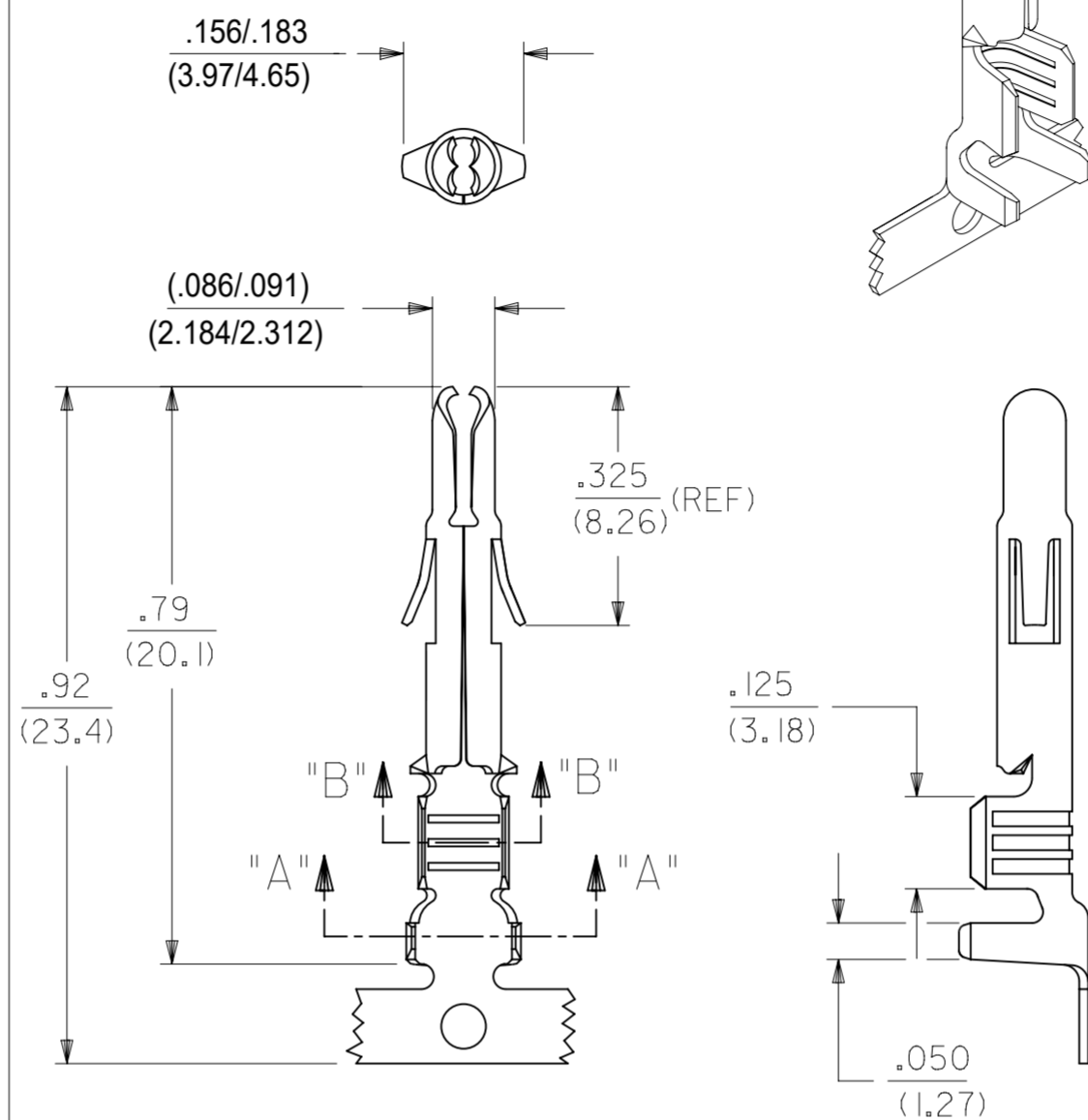


SOLID PIN TERMINAL  
42023-1\*\*\*



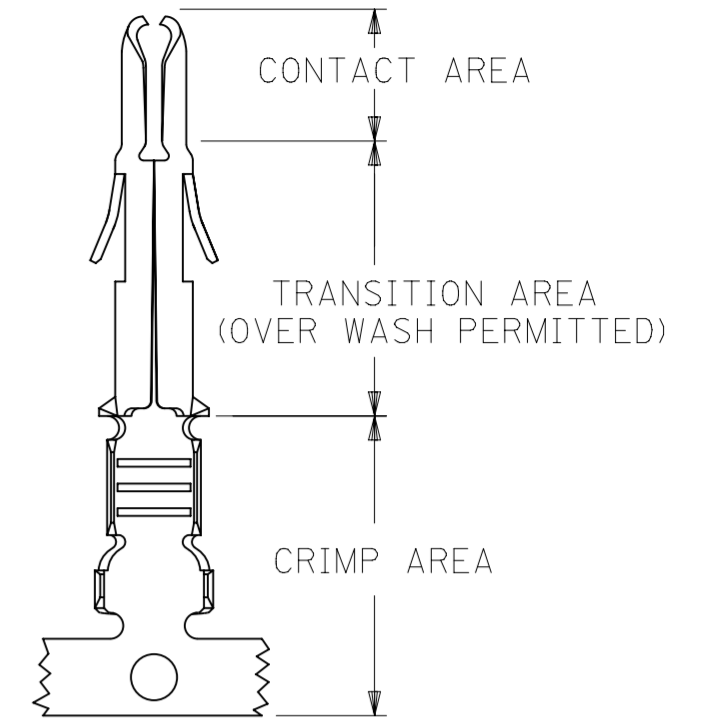
SPLIT PIN TERMINAL  
42023-2\*\*\*



SEE SHEET2 FOR CHART, MATERIAL, PLATING, NOTES, AND CRIMP OPTIONS

THIS DRAWING CONTAINS INFORMATION THAT IS PROPRIETARY TO MOLEX ELECTRONIC TECHNOLOGIES, LLC AND SHOULD NOT BE USED WITHOUT WRITTEN PERMISSION									
DIMENSION UNITS <b>IN/MM</b>		SCALE <b>NTS</b>		CURRENT REV DESC: REMOVED OBSOLETE PART NUMBERS AS PER PCN#516585					
GENERAL TOLERANCES (UNLESS SPECIFIED)				EC NO: 823299		2025/05/23		<b>molex</b>	
4 PLACES ±		±		DRWN: VISHAH2		2025/05/29			
3 PLACES ±		± 0.01		CHK'D: GGA		2025/05/29		TERMINAL, PIN .084/(2.13) DIA. SERIES	
2 PLACES ±		± 0.25		APPR: GGA		2025/05/29			
1 PLACE ±		± 0.38		INITIAL REVISION:				PRODUCT CUSTOMER DRAWING	
0 PLACES ±		±		DRWN: SUDHIR		2004/09/24			
ANGULAR TOL ±		± 0.5 °		APPR: KPRASAD		2004/09/24		DOCUMENT NUMBER <b>SD-42023-XXXX</b>	
DRAFT WHERE APPLICABLE MUST REMAIN WITHIN DIMENSIONS				THIRD ANGLE PROJECTION		DRAWING <b>A2-SIZE</b>		SERIES <b>42023</b>	
						MATERIAL NUMBER SEE TABLE		CUSTOMER GENERAL MARKET	
								DOC TYPE <b>PSD</b>	
								DOC PART <b>001</b>	
								REVISION <b>F2</b>	
								SHEET NUMBER 1 OF 2	

ENG. NO.	EDP NO.	FINISH (REF)	CONTACT AREA (REF)	CRIMP AREA (REF)	MATERIAL (REF)	TERMINAL TYPE	WIRE SIZE	INSULATION DIAMETER	STATUS
X-42023-IAI	PRELIMINARY	SDES-88-P90I	----	----	C26000	SOLID	#14-#20 AWG	.060-.130	ACTIVE
X-42023-IAL	PRELIMINARY	SDES-88-P90I	----	----	C26000	SOLID	#14-#20 AWG	.060-.130	ACTIVE
42023-2AI	002-08-2003	SDES-88-P90I	----	----	C26000	SPLIT	#14-#20 AWG	.060-.130	ACTIVE
42023-2AIL	002-08-2004	SDES-88-P90I	----	----	C26000	SPLIT	#14-#20 AWG	.060-.130	ACTIVE
42023-2BI	002-08-2005	SDES-88-P90I	----	----	C51000	SPLIT	#14-#20 AWG	.060-.130	ACTIVE
42023-2BIL	002-08-2006	SDES-88-P90I	----	----	C51000	SPLIT	#14-#20 AWG	.060-.130	ACTIVE



## PLATING REGIONS

APPLIES TO GOLD PLATED TERMINALS ONLY

### NOTES:

1) PIN TERMINALS FOR USE WITH THE .084/(2.13) SERIES HOUSINGS:

PLUG (42021-\*\*)   
 CAP (42022-\*\*)

2) PIN TERMINALS MATE WITH SOCKET TERMINALS: .084/(2.13) DIA. SERIES (42024-\*\*\*\*).

3) TERMINALS FINISHED IN CHAIN UNLESS SPECIFIED LOOSE. "L" SUFFIX INDICATES LOOSE FORM. (SEE TABLE)

4) MATERIAL; .012/(0.30) THICK STRIP:   
 A = BRASS, #C26000, PER SMES-124-C7.   
 B = PHOSPHOR BRONZE, #C51000, PER SMES-124-E7.

5) FINISH:   
 1 = HOT TIN DIP 20 m.l./(0.51 MICRONS) MINIMUM (PER SDES-88-P90I).   
 2 = 30 M.I (0.75 MICRONS) MIN GOLD & 100 M.I (2.50 MICRONS) MIN SELECT TIN 50 M.I (1.25 MICRONS) MIN NICKEL OVERALL

6) CRIMP RANGE: SEE CHART.

7) PRODUCT SPECIFICATION PS-42022-0001 APPLIES.

### LEGEND:

42023-\*\*\*   
 BASE NUMBER ———— \* \* \* \*   
 FORM: BLANK = CHAIN "L" = LOOSE   
 TERMINAL: 1 = SOLID PIN ———— PLATING CODE (SEE NOTE 5)   
 2 = SPLIT PIN ———— MATERIAL CODE (SEE NOTE 4)

THIS DRAWING CONTAINS INFORMATION THAT IS PROPRIETARY TO MOLEX ELECTRONIC TECHNOLOGIES, LLC AND SHOULD NOT BE USED WITHOUT WRITTEN PERMISSION									
DIMENSION UNITS		SCALE		CURRENT REV DESC: REMOVED OBSOLETE PART NUMBERS AS PER PCN#516585				<b>molex</b>	
IN/MM		NTS							
GENERAL TOLERANCES (UNLESS SPECIFIED)				EC NO: 823299		2025/05/23		TERMINAL, PIN .084/(2.13) DIA. SERIES	
				DRWN: VISHAH2		2025/05/29			
				CHK'D: GGA		2025/05/29		PRODUCT CUSTOMER DRAWING	
				APPR: GGA		2025/05/29			
				INITIAL REVISION:				DOCUMENT NUMBER	
				DRWN: SUDHIR		2004/09/24			
				APPR: KPRASAD		2004/09/24		SD-42023-XXXX	
				DRAFT WHERE APPLICABLE MUST REMAIN WITHIN DIMENSIONS		THIRD ANGLE PROJECTION		DRAWING	
						SERIES		MATERIAL NUMBER	
						A2-SIZE		42023	
						SEE TABLE		CUSTOMER	
						GENERAL MARKET		SHEET NUMBER	
								2 OF 2	