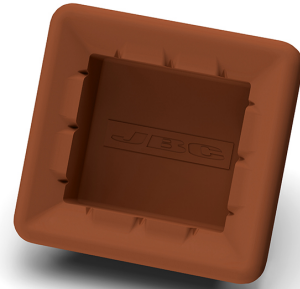


CL7984 Wiper for Compact Stations

Very soft and temperature resistant receptacle which allows tapping and wiping of the tip to eliminate the excess of solder. It is used with **Compact Stations**



REFERENCES

CL7984

PRODUCT COMPOSITION

1 - CL7984 Wiper for Compact Stations

WEIGHT AND DIMENSIONS

Package	90 x 55 x 40 mm / 0.03 kg
	3.54 x 2.17 x 1.57 in / 0.07 lb