

CHERRY 



**CHERRY MX2A SILENT
BLACK**

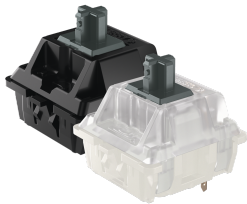
DATASHEET

CHERRY MX2A SILENT BLACK

POWERFUL AND SILENT

Like the CHERRY MX BLACK, the CHERRY MX SILENT BLACK is featured by a linear switching characteristic as well. The operating noises are reliably minimized by a patented damping. The switch with the silent CHERRY MX technology establishes itself as a strong choice regarding to its increased spring force and soft actuation.

Original CHERRY MX is the world's leading precision technology for mechanical key switches. The CHERRY Gold Crosspoint contact concept and the unprecedented production quality "Made in Germany" are unique. The MX2A series introduces a new level typing experience, setting a new standard for mechanical key switches.



HIGHLIGHTS

- Linear switching characteristics
- 60 cN operating force
- 2.0 mm pre travel
- 4.0 mm total travel
- > 50 mil. keystrokes
- Lubricated
- No click

TECHNICAL DATA

MECHANICAL

Operating life	>50m.
Plunger colour	red
Pre-Travel	1,9 mm
Spring	Stainless steel

FORCE

Actuation force	45 cN
Initial force	30 cN
Final force	100 cN

PRODUCT VARIANTS

PART NUMBER	RGB
MX2A-81NA	yes
MX2A-81NB	yes
MX2A-81NN	no
MX2A-81NW	no

MX2A RGB [MX2A-81NA]



Product colour: Red

Part number	MX2A-81NA
EAN	4025112108310

MECHANICAL

Type	mechanical, MX2A RGB
Operating life	>50m.
Plunger colour	black
Pre-Travel	1,9 mm
RGB	yes
Spring	Stainless steel
Cover colour	transparent
Bottom housing colour	translucent

FORCE

Actuation force	60 cN
Initial force	30 cN
Final force	100 cN

MX2A RGB [MX2A-81NB]



Product colour: Red

Part number	MX2A-81NB
EAN	4025112112157

MECHANICAL

Type	mechanical, MX2A RGB
Operating life	>50m.
Plunger colour	red
Pre-Travel	1,9 mm
RGB	yes
Spring	Stainless steel
Cover colour	transparent
Bottom housing colour	translucent

FORCE

Actuation force	45 cN
Initial force	30 cN
Final force	100 cN

MX2A STANDARD [MX2A-81NN]



Product colour: Red

Part number	MX2A-81NN
EAN	4025112108327

MECHANICAL

Type	mechanical, MX2A
Operating life	>50m.
Plunger colour	red
Pre-Travel	1,9 mm
RGB	no
Spring	Stainless steel
Cover colour	black
Bottom housing colour	black

FORCE

Actuation force	45 cN
Initial force	30 cN
Final force	100 cN

MX2A STANDARD [MX2A-81NW]



Product colour: Red

Part number	MX2A-81NW
EAN	4025112108334

MECHANICAL

Type	mechanical, MX2A
Operating life	>50m.
Plunger colour	red
Pre-Travel	1,9 mm
RGB	no
Spring	Stainless steel
Cover colour	black
Bottom housing colour	black

FORCE

Actuation force	45 cN
Initial force	30 cN
Final force	100 cN

© Cherry Europe GmbH

Cherrystraße 2 · 91275 Auerbach/OPf. · Germany
cherry-world.com · cherry.de

Sales Support · Technischer Support · eHealth Support

+49 9643 - 2061 - 100
www.cherry.de/de-de/kontakt

Errors, technical changes and delivery options reserved. Technical information refers only to the specification of the products. Properties are not guaranteed.