

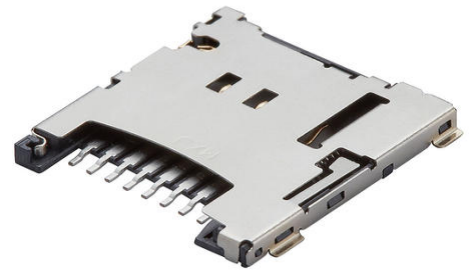
Part Number : [5031821852](#)

Product Description : 1.10mm Pitch microSD Memory Card Connector, Normal Mount Surface Mount, Push-Push Type, 1.45mm Height, Anti-card fly-out

Series Number : 503182

Status : Obsolete

Product Category : Memory / SIM Card Connectors



Documents and Resources

Drawings

[5031821852 sd.pdf](#)

[5031821852 stp.zip](#)


[Symbol and Footprint \(Multi-Format\)](#)

Specifications

[PS-503182-006-001.pdf](#)

Product Environment Compliance

Compliance

GADSL/IMDS	Compliant with Exemption 44; 34; 33
China RoHS	 per SJ/T 11365-2006
EU ELV	Not Relevant
Low-Halogen Status	Low-Halogen per IEC 61249-2-21
REACH SVHC	Not Contained per D(2025)7771-DC (04 Feb 2026)
EU RoHS	Compliant per EU 2015/863

Compliance Statements

- EU RoHS
- REACH SVHC
- Low-Halogen

Industry Documents

- IPC 1752A Class C
- IPC 1752A Class D
- Molex Product Compliance Declaration
- IEC-62474
- chemSHERPA (xml)

Substances of Interest

- PFAS

EU RoHS Certificate of Compliance

Additional Product Compliance Information

Part Details

General

Status	Obsolete
Category	Memory / SIM Card Connectors
Series	503182
Description	1.10mm Pitch microSD Memory Card Connector, Normal Mount Surface Mount, Push-Push Type, 1.45mm Height, Anti-card fly-out
Product Name	microSD Card
Style	Push-Push
UPC	887191053714

Electrical

Current - Maximum per Contact	0.5A
Shielded	Yes
Voltage - Maximum	10V AC (RMS)/DC

Physical

Card Detection Switch	Yes
Circuits (Loaded)	8
Durability (mating cycles max)	10000
Ejector Button Side	N/A
Material - Contact	Copper Alloy
Material - Plating Termination	Gold, Tin
Material - Shell	Stainless Steel

Net Weight	357.755/mg
Packaging Type	Embossed Tape on Reel
PCB Retention	Yes
Pitch - Mating Interface	1.10mm
Temperature Range - Operating	-25° to +85°C
Termination Interface Style	Surface Mount

Mates With / Use With

Use with Part(s)

Description	Part Number
Use With	microSD Card

This document was generated on Mar 13, 2026

Obsolete