

## ESD COVERINGS AND ACCESSORIES

especially for EDP and cash-register

The workbench pads consist of antistatic synthetic caoutchouc, with homogeneous, conductive, black rear. The surface is slightly grained. The synthetic caoutchouc material is very wear- and heat-resistant, nonskid and lies very flat.

Technical data: material thickness 2 mm  
leakage resistance (DIN IEC 61340-4-1)  $R_A$ :  $10^5 - 10^7$  ohm  
time of discharge from 5000 to 50 Volt: < 2 Sec.

Colour: **platinum grey**

- 9-348 **ESD set** / pad 800 x 600 mm  
especially for cash-register, EDP-terminals  
consisting of:  
workbench pad with 1 press-stud 10 mm for the earthing connection;  
earth wire No. 9-346 including crocodile clip No. 9-353. (Weight: 1350 g)
- 9-365 **ESD set** / pad 600 x 300 mm  
especially for keyboards  
consisting of:  
workbench pad with 2 press-studs 10/10 mm for connecting the earth wire and  
the junction to the mousepad; earth wire with dummy Schuko-plug No. 9-359.  
(Weight: 550 g)
- 9-367 **ESD set** / pad 600 x 450 mm  
especially for CPU (central processing units), printer, scanner  
consisting of:  
workbench pad with 1 press-stud 10 mm for the earthing connection;  
earth wire with dummy Schuko-plug No. 9-359. (Weight: 750 g)
- 9-368 **ESD set** / pad 600 x 600 mm  
especially for CPU (central processing unit), printer, scanner  
consisting of:  
workbench pad with 1 press-stud 10 mm for the earthing connection;  
earth wire No. 9-346 including crocodile clip No. 9-353. (Weight: 930 g)



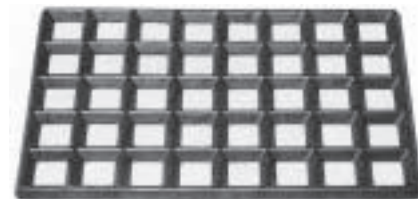
9-365

## ESD ACCESSORIES

### Grid mats made from solid rubber

repair support, in conductive execution, according to DIN 482

- 9-335 Grid mat size I, measure: 625 x 375 x 20 mm Weight: 2500 g
- 9-336 Grid mat size II, measure: 700 x 450 x 20 mm Weight: 3350 g

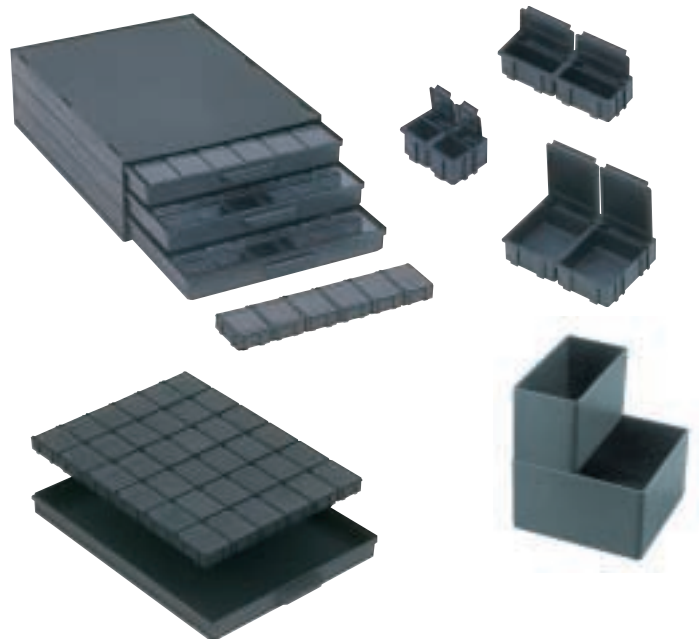


9-335

### Boxes for SMD components

from black, conductive plastic, to be fit into one another at random, hinged cover, closed tightly by spring pull, in 3 different sizes

- 9-321 SMD box 16 x 12 x 15 mm (internal dimensions) Weight: 5 g
- 9-322 SMD box 37 x 12 x 15 mm (internal dimensions) Weight: 10 g
- 9-323 SMD box 41 x 37 x 15 mm (internal dimensions) Weight: 15 g



### Cabinet for SMD boxes

- 9-320 from black, conductive plastic, with 3 removable drawers, each 340 x 250 x 22 mm  
suitable for:  
432 boxes No. 9-321 ( 144 per drawer )  
216 boxes No. 9-322 ( 72 per drawer )  
108 boxes No. 9-323 ( 36 per drawer )

Weight: 1900 g

### Storage boxes

electrically conductive interchangeable containers, black

- 9-311 box 108 x 54 x 63 mm (external dimension) Weight: 40 g
- 9-312 box 108 x 108 x 63 mm (external dimension) Weight: 70 g

### Chip-container

electrically conductive, black, with lid a pin-cushion lining 5 mm thick, for pins of electrostatically endangered components

- 9-316 chip-container 118 x 32 x 14 mm (internal dimensions) Weight: 30 g
- 9-319 chip-container 54 x 25 x 14 mm (internal dimensions) Weight: 10 g



**ESD/EGB tools** please see the special sides in the article groups screwdriver, pliers, tweezers und socket wrenches resp. complete sets of conductive tools under service cases/service boxes.