

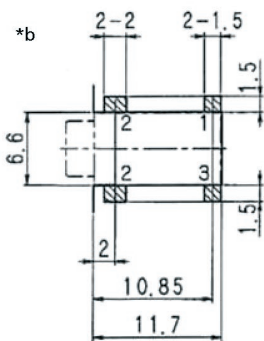
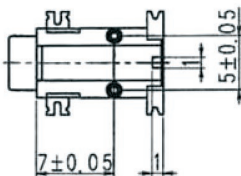
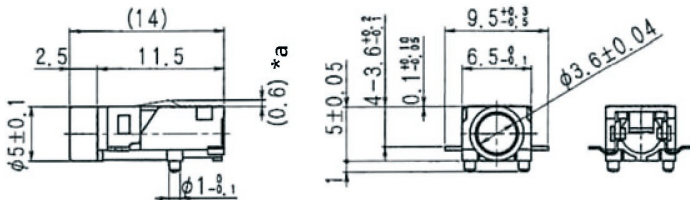
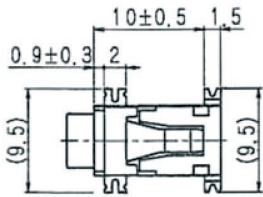
15

1503 02

Jack connectors



Jack chassis socket acc. to JIS C 6560 JC35J3A, 3.5 mm, 3 poles/stereo, angular version, for printed circuit boards, surface mounting technology (SMT), manual soldering only



Environmental conditions

Temperature range -20 °C/+70 °C

Materials

Insulating body PBT, HB according to UL94
Contact spring Cu alloy, tin-plated/silver-plated
Inner sleeve

Mechanical data

Mating cycles 5000
Insertion force 5-30 N¹
Withdrawal force 5-30 N¹

¹ measured with a gauge plug

Electrical data (at T_{amb} 20 °C)

Contact resistance < 30 mΩ
Rated current 1 A
Rated voltage 34 V AC/DC
Rated impulse voltage 500 V/60 s
Insulation resistance > 100 MΩ

Associated products

Counterparts
 ☞ 1532 07 ☞ 1532 10 ☞ 1532 11
 ☞ KLS 40 ☞ KLS 44 ☞ WKLS 40

*a with mated plug
*b printed circuit board layout, components side view

15

1503 02

Designation	Pole Number	PU (Pieces)	MDQ (Pieces)
1503 02	3	500	500

Packaging:

in bulk, in a cardboard box or a plastic bag