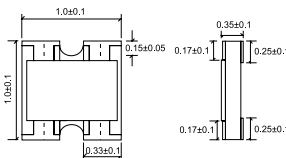
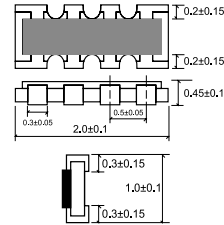
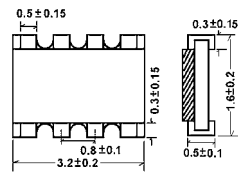
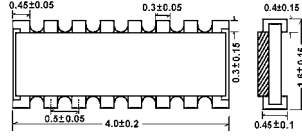
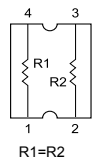
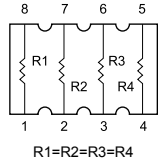
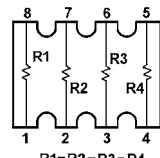
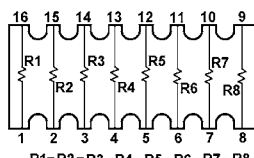


Feature

- High density, more than 1 Resistors in one small case.
- Improvement of placement efficiency.
- Tape / Reel packaging is suitable for automatic placement machine.
- Superior solderability.



	2D02	4D02 (RA0805)	4D03 (RA1206 Series)	16P8
Dimension (mm)				
Equivalent Circuit Diagram				

Performance Specifications

Type	2D02	4D02	4D03	16P8
Rated power at 70°C	1/16W	1/16W	1/16W	1/16W
Max. working voltage	25V	25V	50V	50V
Max. Overload Voltage	50V	50V	100V	100V
Dielectric withstanding voltage	100V	100V	300V	300V
Resistance range	5% (E-24 ):10Ω~1MΩ 1% (E-96 ): 10Ω~1MΩ	5% (E-24 ):10Ω~1MΩ 1% (E-96 ): 10Ω~1MΩ	5% (E-24 ): 1Ω~1MΩ 1% (E-96 ): 1Ω~1MΩ	5% (E-24 ): 1Ω~1MΩ 1% (E-96 ): 1Ω~1MΩ
Temperature coefficient	±200PPM/°C	±200PPM/°C	≥ 10Ω: ±200PPM/°C < 10Ω: ±400PPM/°C	≥ 10Ω: ±200PPM/°C < 10Ω: ±400PPM/°C
Operating temperature range	-55°C~+125 °C	-55°C~+125 °C	-55°C~+125 °C	-55°C~+125 °C
Resistance Value of Jumper	<50mΩ	<50mΩ	<50mΩ	<50mΩ
Jumper Rated Current	1A	1A	1A	1A

Performance Specifications

Short time overload	±(2.0% ±0.1Ω) Max.
Insulation resistance	≥ 1,000 Mega Ohm.
Dielectric withstanding voltage	No evidence of flashover, mechanical damage, arcing or insulation breakdown.
Terminal bending	±(1.0% ±0.05Ω) Max
Soldering heat	Resistance change rate is ±(1.0% ±0.05Ω) Max.
Solderability	Min. 95% coverage.
Temperature cycling	ΔR/R ≤ ±(1.0% ±0.05Ω)
Load life in humidity	±(3.0% ±0.1Ω) Max.
Load life	±(3.0% ±0.1Ω) Max.

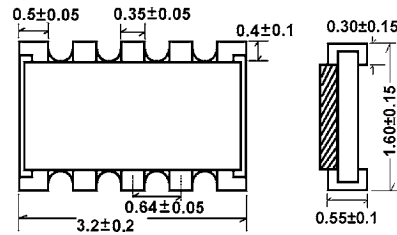
• Please refer to page 4 for the information of Ordering Procedure (Part No.)

## Feature

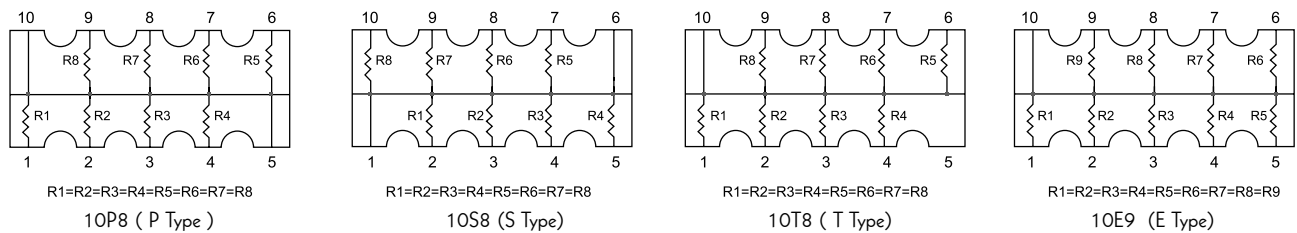
- High density, more Resistors in one SMD case.
- Improvement of placement efficiency.
- Tape / Reel packaging is suitable for automatic placement machine.
- Superior solderability.



## Dimension (mm)



## Equivalent Circuit Diagram



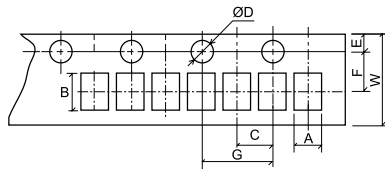
## Feature

Rated power at 70°C	1/32W (special code "WH" in Part No.), 1/16W
Max. working voltage	25V
Max. Overload Voltage	50V
Dielectric withstanding voltage	50V
Operating temperature range	-55°C ~ +125 °C
Resistance Range	5% (E-24 series): 10Ω~1MΩ 1% (E-96 series): 10Ω~1MΩ
Resistance Value of Jumper	<50mΩ
Jumper Rated Current	0.5A

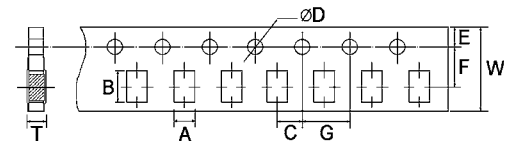
Temperature coefficient	$\pm 200\text{PPM}/^\circ\text{C}$
Short time overload	$\pm (2.0\% \pm 0.05\Omega)$ Max.
Insulation resistance	$\geq 1,000$ Mega Ohm.
Dielectric withstanding voltage	No evidence of flashover, mechanical damage, arcing or insulation breakdown.
Terminal bending	$\pm (1.0\% \pm 0.05\Omega)$ Max.
Soldering heat	Resistance change rate is $\pm (1.0\% \pm 0.05\Omega)$ Max.
Solderability	Min. 95% coverage.
Load life in humidity	$\pm (3.0\% \pm 0.1\Omega)$ Max.
Load life	$\pm (3.0\% \pm 0.1\Omega)$ Max.

- Please refer to page 4 for the information of Ordering Procedure (Part No.)

Dimension of Paper Taping (mm)



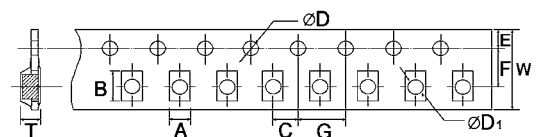
0402 4D02 2D02



4D03 0603 0805 1206 1210 10P8

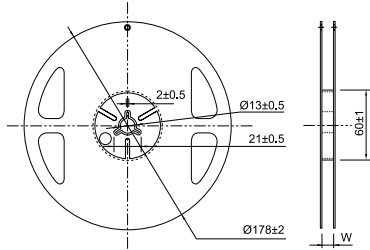
TYPE	A±0.2	B±0.2	C±0.05	Ø D $\begin{smallmatrix} +0.1 \\ -0 \end{smallmatrix}$	E±0.1	F±0.05	G±0.1	W±0.2	T±0.1
0402									
TC02	0.65	1.15	2.0	1.5	1.75	3.5	4.0	8.0	0.45
0603									
TC03	1.10	1.90	2.0	1.5	1.75	3.5	4.0	8.0	0.67
0805									
TC05	1.65	2.40	2.0	1.5	1.75	3.5	4.0	8.0	0.81
HV05									
1206									
TC06	2.00	3.60	2.0	1.5	1.75	3.5	4.0	8.0	0.81
HV06									
1210	2.80	3.50	2.0	1.5	1.75	3.5	4.0	8.0	0.75
2D02	1.20	1.20	2.0	1.5	1.75	3.5	4.0	8.0	0.45
4D02	1.20	2.20	2.0	1.5	1.75	3.5	4.0	8.0	0.70
4D03	2.00	3.60	2.0	1.5	1.75	3.5	4.0	8.0	0.83
10P8	2.00	3.60	2.0	1.5	1.75	3.5	4.0	8.0	0.85

Dimension of Embossed Taping (mm)



TYPE	A±0.2	B±0.2	C±0.05	Ø D $\begin{smallmatrix} +0.1 \\ -0 \end{smallmatrix}$	Ø D <sub>1</sub> $\begin{smallmatrix} +0.25 \\ -0 \end{smallmatrix}$	E±0.1	F±0.05	G±0.1	W±0.2	T±0.1
2010										
TC10	2.9	5.6	2.0	1.5	1.5	1.75	5.5	4.0	12	1.0
HV10										
2512										
TC12	3.5	6.7	2.0	1.5	1.5	1.75	5.5	4.0	12	1.0
16P8	1.8	4.4	2.0	1.5	1.5	1.75	5.5	4.0	12	1.0

## Dimension of Reel (mm)



TYPE	Taping	Qty./Reel	Tape Width	W $\pm$ 1
0402	Paper	10,000	8mm	10
TC02				
0603	Paper	5,000pcs	8mm	10
TC03				
0805	Paper	5,000pcs	8mm	10
TC05				
HV05	Paper	5,000pcs	8mm	10
1206				
TC06	Paper	5,000pcs	8mm	10
HV06				
1210	Paper	5,000pcs	8mm	10
2010				
TC10	Embossed	4,000pcs	12mm	13.8
HV10				
2512	Embossed	4,000pcs	12mm	13.8
TC12				
2D02	Paper	10,000pcs	8mm	10
4D02	Paper	10,000pcs	8mm	10
4D03	Paper	5,000pcs	8mm	10
10P8	Paper	5,000pcs	8mm	10
16P8	Embossed	4,000pcs	12mm	13.8

## Dimension of Bulk Cassette (mm)



36(H)×12(W)×110(L)

Bulk Cassette packing available on a case to case basis.