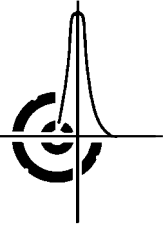


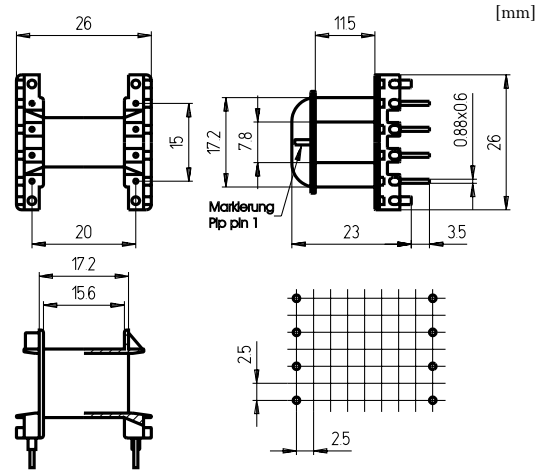
SPULENKÖRPER für E-Kern E(F) 25/11 liegend

COIL FORMER for E core E(F) 25/11 horizontal



| | Bezeichnung/Designation | |
|---|-------------------------|----|
| | SP-E 25/11 - 1418 | |
| Kammeranzahl <i>No. of sections</i> | 1 | |
| A_N in mm ² | 60,8 | |
| l_N in mm | 58,9 | |
| max. Stiftanzahl <i>max. no. of pins</i> | 8 | 12 |
| Bestell-Nr. <i>Order no.</i> | 500 251 110 12M | |

Bestiftungsvarianten möglich/Pin connections variable



Standardmaterial/Standard material : Polyamid(e) (z.B./e.g. Durethan AKV30H)

empfohlene Platinenbohrungen siehe S. 21
recommended diameters of p.c. board mounting holes see p. 21