

Power Type Wire Wound Resistors
Non Flammable Wire Wound Resistor

R Series

電 Power Type

R type :

固定電阻

Fixed Resistor

SR type :

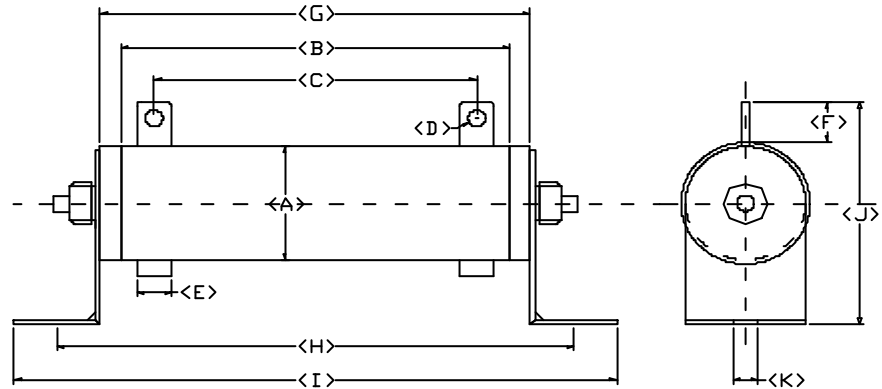
可調電阻

Adjustable Resistor

NR type :

無感電阻

Noninductive Resistor



SPEC.

定格電 (W) Power Rating	尺寸 Dimensions (mm)											電阻值範圍 Resistance Range
	A±	B±	C±	D±0.1	E±0.2	F±	G±	H±0.2	I±	J±	K±	
R- 10W	12.5	45	35	2.1	4	10	47	59	76	30	4	1 ~ 10K
R- 20W	4	16.5	60	45	3	5	12	63	70	87	4	1 ~ 20K
R- 30W	41	4	16.5	80	65	3	5	12	82	104	4	1 ~ 30K
R- 40W	120	41	4	16.5	110	95	3	5	12	112	4	1 ~ 40K
R- 50W	134	150	41	4	25	110	92	5.2	8	19	6	0.1 ~ 50K
R- 60W	120	142	164	58	6	28	90	74	5.2	8	6	0.1 ~ 60K
R- 80W	17	101	123	145	60	6	28	110	94	5.2	6	0.1 ~ 80K
R- 100W	8	17	121	143	165	60	6	28	140	124	6	0.1 ~ 100K
R- 120W	5.2	8	17	151	173	195	60	6	28	160	6	0.1 ~ 120K
R- 150W	144	5.2	8	17	171	193	215	60	6	28	6	0.1 ~ 150K
R- 160W	195	179	5.2	8	17	206	229	250	60	6	8	0.1 ~ 160K
R- 200W	35	185	167	5.2	8	18	197	217	245	75	8	0.1 ~ 200K
R- 250W	8	35	210	192	5.2	8	18	222	242	270	8	0.5 ~ 250K
R- 300W	75	8	40	210	180	5.2	10	19	222	242	8	0.5 ~ 300K
R- 400W	270	77	8	40	260	230	5.2	10	19	272	8	0.5 ~ 400K
R- 500W	292	320	77	8	40	330	300	5.2	10	19	9	0.5 ~ 500K
R- 600W	342	380	390	77	8	50	330	300	6.2	12	9	1 ~ 600K
R- 700W	26	346	367	400	105	9	50	400	370	6.2	9	1 ~ 700K
R- 800W	12	26	416	437	470	105	9	50	460	425	10	1 ~ 800K
R- 1000W	6.2	15	26	480	505	533	105	9	60	460	10	1 ~ 1M
R- 1300W	425	6.2	15	28	480	505	533	112	10	60	10	1 ~ 1.3M