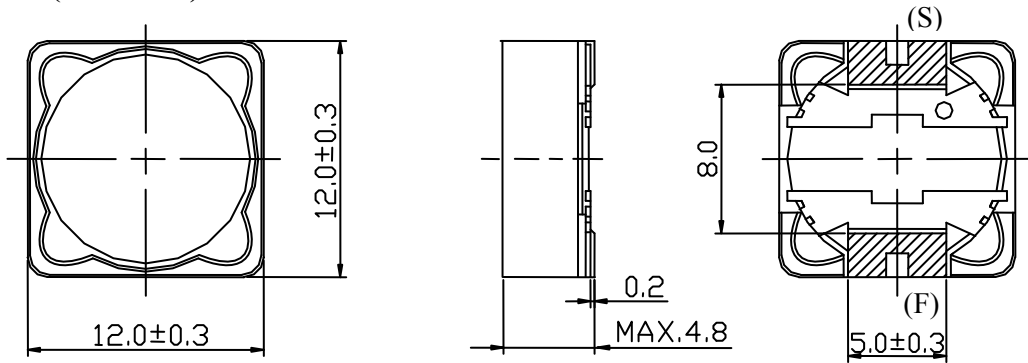


# \*SPECIFICATION\*

TYPE
DRH124NP

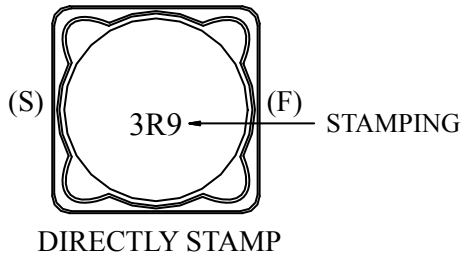
## 1. DIMENSION (UNIT:mm)



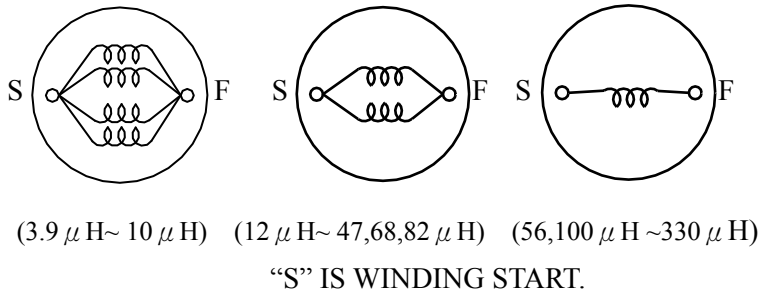
 ELECTRODE TERMINAL

\* ELECTRODE WITH A "○" MARK IS THE ELECTRODE (S).  
 \* DIMENSIONS WITHOUT TOLERANCE ARE APPROX.

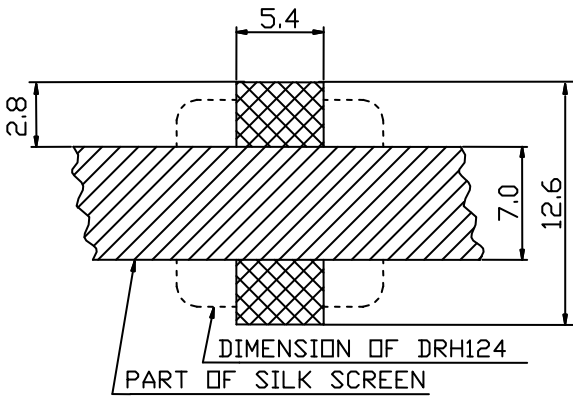
## 2. STAMPING (e.g.)



## 3. CONNECTION (INTERNAL)



## 4. LAND PATTERN (UNIT: mm)



TYPE
<b>DRH124NP</b>

### 5. ELECTRICAL CHARACTERISTICS

No.	PART No.	STAMP	INDUCTANCE ( $\mu$ H) WITHIN	D.C.R. ( $m\Omega$ , at 20°C) MAX.	RATED CURRENT (A) MAX.	
					Idc1	Idc2
01	DRH124NP-3R9M	3R9	3.9 $\pm$ 20%	13.7	8.26	6.68
02	DRH124NP-5R2M	5R2	5.2 $\pm$ 20%	15.5	7.19	6.03
03	DRH124NP-6R8M	6R8	6.8 $\pm$ 20%	19.9	6.37	5.53
04	DRH124NP-8R2M	8R2	8.2 $\pm$ 20%	24.4	5.72	5.00
05	DRH124NP-100M	100	10 $\pm$ 20%	32.4	5.19	4.50
06	DRH124NP-120M	120	12 $\pm$ 20%	35.6	4.75	4.00
07	DRH124NP-150M	150	15 $\pm$ 20%	43.9	4.38	3.50
08	DRH124NP-180M	180	18 $\pm$ 20%	52.1	3.79	3.18
09	DRH124NP-220M	220	22 $\pm$ 20%	65.7	3.34	3.11
10	DRH124NP-270M	270	27 $\pm$ 20%	70.3	3.16	2.75
11	DRH124NP-330M	330	33 $\pm$ 20%	90.5	2.84	2.60
12	DRH124NP-390M	390	39 $\pm$ 20%	123.9	2.59	1.96
13	DRH124NP-470M	470	47 $\pm$ 20%	132.3	2.37	1.91
14	DRH124NP-560M	560	56 $\pm$ 20%	168.9	2.19	1.73
15	DRH124NP-680M	680	68 $\pm$ 20%	181.9	2.04	1.58
16	DRH124NP-820M	820	82 $\pm$ 20%	214.8	1.79	1.52
17	DRH124NP-101M	101	100 $\pm$ 20%	266.3	1.63	1.36
18	DRH124NP-121M	121	120 $\pm$ 20%	330.6	1.51	1.19
19	DRH124NP-151M	151	150 $\pm$ 20%	468.9	1.33	1.01
20	DRH124NP-181M	181	180 $\pm$ 20%	524.9	1.22	0.95
21	DRH124NP-221M	221	220 $\pm$ 20%	602.6	1.13	0.85
22	DRH124NP-271M	271	270 $\pm$ 20%	823.9	1.05	0.74
23	DRH124NP-331M	331	330 $\pm$ 20%	932.1	0.95	0.69

\* MEASURING FREQUENCY L at 100 kHz, 1V(L < 10  $\mu$  H)

L at 1 kHz, 1V(L  $\geq$  10  $\mu$  H)

Idc1: THIS INDICATES THE CURRENT WHEN THE INDUCTANCE IS 25% LESS THAN IT'S NOMINAL VALUE.

Idc2: THIS INDICATES THE CURRENT WHEN THE TEMPERATURE RISE IS 40°C (Ta = 20°C)

## 6. GENERAL CHARACTERISTICS

\* STANDARD TESTING CONDITIONS:

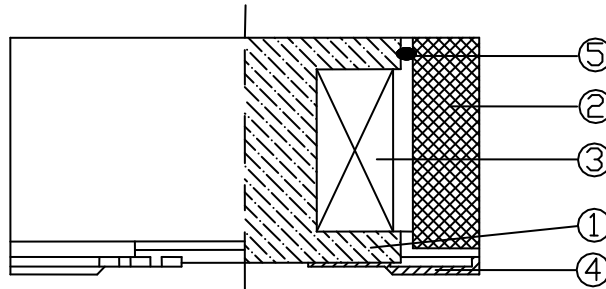
UNLESS OTHERWISE SPECIFIED, THE STANDARD RANGE OF ATMOSPHERIC CONDITIONS FOR MEASUREMENTS AND TESTS ARE AS FOLLOWS: AMBIENT TEMPERATURE: 15°C TO 35°C. RELATIVE HUMIDITY : 25% TO 85%. AIR PRESSURE : 86kPa TO 106kPa.

IF THERE IS ANY DOUBT ABOUT THE RESULTS, MEASUREMENT SHALL BE MADE WITHIN THE FOLLOWING LIMITS: AMBIENT TEMPERATURE: 20°C±1°C. RELATIVE HUMIDITY : 63% TO 67%. AIR PRESSURE : 86kPa TO 106kPa.

No.	ITEMS	CONDITIONS	SPECIFICATION
1	OPERATION TEMPERATURE  STORAGE TEMPERATURE		-25 ~ +100°C (INCLUDING COIL TEMPERATURE RISE) -30 ~ +100°C
2	FIXING STRENGTH	SAMPLE IS PUSHED IN THREE DIRECTIONS OF X.Y AND Z WITH THE FORCE OF 5.0N FOR 60±5 SECONDS.AFTER SOLDERING BETWEEN COPPER PLATE AND ELECTRODES.	NO ELECTRODE DETACHMENT.
3	RESISTANCE TO SOLDERING HEAT TEST	REFER TO STD-002	NO MECHANICAL BREAKAGE. DEVIATION RELATIVE TO INITIAL VALUE: L: WITHIN ±5.0%
4	SOLDERABILITY TEST	IMMERSE THE ELECTRODE IN FLUX FOR 5 SEC. THEN DIP THE T ELECTRODE INTO SOLDER BATH CONTAINING MOLTEN SOLDER AT 245±5°C FOR 2±0.5 SECONDS.	OVER 90% OF THE SURFACE BEING IMMersed SHALL BE COVERED WITH A NEW UNIFORM SOLDER.
5	VIBRATION TEST	AMPLITUDE:1.5mm P-P FREQUENCY:10~55~10Hz (1 MINUTE PER CYCLE) DARATION:2H IN EACH OF X.Y.Z AXIS(TOTAL 6H)	DEVIATION RELATIVE TO INITIAL VALUE: L: WITHIN ±3.0%
6	SHOCK TEST	PEAK ACCELERATION: 981m/s <sup>2</sup> DURATION OF PULSE:10ms SHOCK TIMES: 3 TIMES IN EACH OF X, Y, Z AXIS.(TOTAL 9 TIMES)	DEVIATION RELATIVE TO INITIAL VALUE: L: WITHIN ±3.0%
7	HUMIDITY TEST	TEMPERATURE: 40°C±2°C HUMIDITY: 90%~95%RH DURATION:96±4 HOURS.	DEVIATION RELATIVE TO INITIAL VALUE: L: WITHIN ±5.0%

TYPE
<b>DRH124NP</b>

**7. MATERIAL LIST**



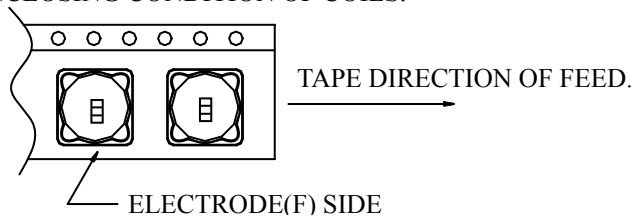
No.	PARTS	MATERIAL	MANUFACTURE	COUNTRY OF ORIGIN	UL No.	UL FLAME CLASS
①	DRUM CORE	FERRITE CORE F041 OR EQUIVALENT	FER RI TE ELECTRONIC IND. CO., LTD.	CHINA	NA	NA
②	RING CORE	FERRITE CORE OR EQUIVALENT	FER RI TE ELECTRONIC IND. CO., LTD.	CHINA	NA	NA
③	WIRE	POLYURETHANE ENAMELLED COPPER WIRE	JUNG SHING WIRE CO., LTD.	CHINA	E174837	NA
④	ELECTRODE	Cu PLATING+ SOLDER PLATING	JIN SHENG ELECTRONIC CO., LTD.	CHINA	NA	NA
⑤	ADHESIVE	EPOXY RESIN	NAGASE& CO., LTD.	JAPAN	NA	NA

**8. PACKING**

\* PACKAGE TO BE ACCORDING TO PACKAGE SPECIFICATIONS (TICK THE RELEVANT “√ ”)

- KB -CTR007
- SPECIAL FOR CUSTOMER KB \_\_\_\_\_.

\* ENCLOSING CONDITION OF COILS.



**9. REMARK**

- \* NO WASHING AGENT.
- \* RECOMMENDED REFLOW CONDITION BASES ON STD-001NP.
- \* DUE TO HEAVY WEIGHT COIL, PLEASE MOUNT THIS COIL AT THE POSITION OF P.C.B. WHERE STANDS A SUPPORT OR BOBBIN.