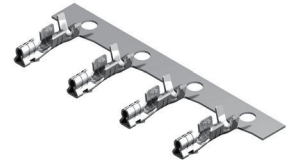
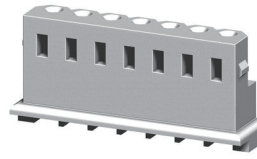
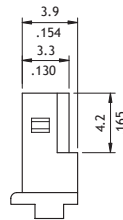
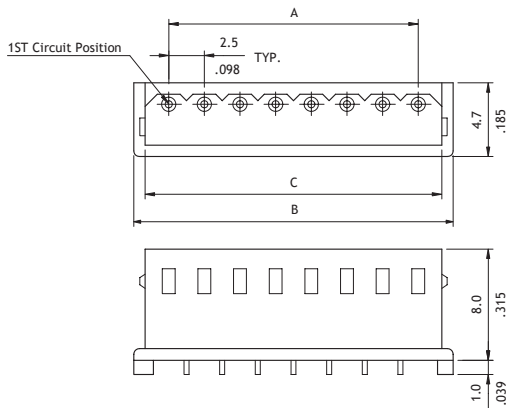


CI25 Series 2.50mm(.098") Wire to Board Connectors Housing & Terminal

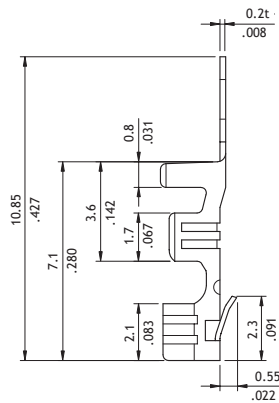
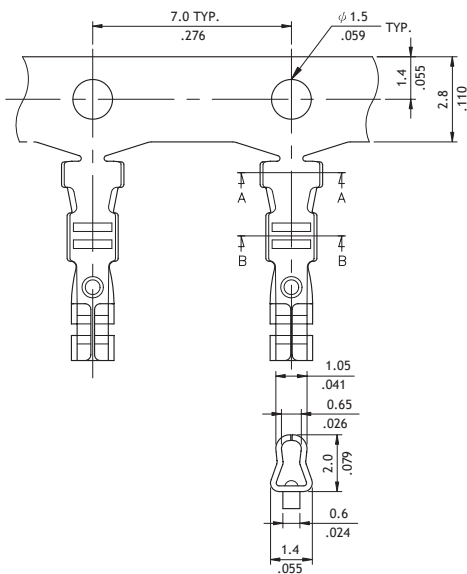
- ⊙ Low profile with locking ribs
- ⊙ Mate with CI25 header
- ⊙ Can be used with CI25 crimp clip terminal
- ⊙ Terminal accommodated AWG #22 ~ #28
- ⊙ Insulator: Nylon 66 UL 94V-0 , Color Ivory
- ⊙ Terminal: Tin plated Phosphor Bronze



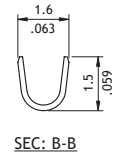
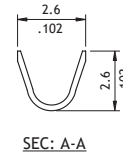
RoHS Compliant  



Circuits	Dimension		
	A	B	C
2	2.5(.098)	7.4(.291)	5.8(.228)
3	5.0(.197)	9.9(.390)	8.3(.327)
4	7.5(.295)	12.4(.488)	10.8(.425)
5	10.0(.394)	14.9(.587)	13.3(.524)
6	12.5(.492)	17.4(.685)	15.8(.622)
7	15.0(.591)	19.9(.783)	18.3(.720)
8	17.5(.689)	22.4(.882)	20.8(.819)
9	20.0(.787)	24.9(.980)	23.3(.917)
10	22.5(.886)	27.4(1.079)	25.8(1.016)
11	25.0(.984)	29.9(1.177)	28.3(1.114)
12	27.5(1.083)	32.4(1.276)	30.8(1.213)
13	30.0(1.181)	34.9(1.374)	33.3(1.311)
14	32.5(1.280)	37.4(1.472)	35.8(1.409)
15	35.0(1.378)	39.9(1.571)	38.3(1.508)



Wire Range	Insulation Diameter	Reel Qty
AWG #22-#28	1.6 (.063) MAX.	10,000 PCS.



Ordering Code

① C I 25 ② 1 2 ③ S ④ 0 0 0 0

- ① Series No.
- ② No. of Circuits: 02 to 15
- ③ S = Housing
- ④ Other Options: 0000 = Standard
- *Special options consult manufacturer

① C I 2 5 ② T 0 2 ③ 1 ④ P ⑤ E 0

- ① Series No.
- ② Type: T02 = AWG #22 ~ #28
- ③ Plating Code: 1 = Tin over Nickel
- ④ Material: P = Phosphor Bronze
- ⑤ Other Options: E0 = Standard