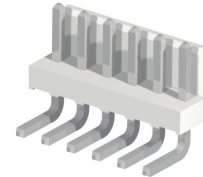
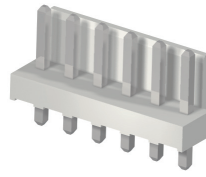


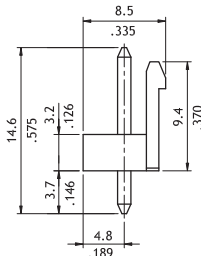
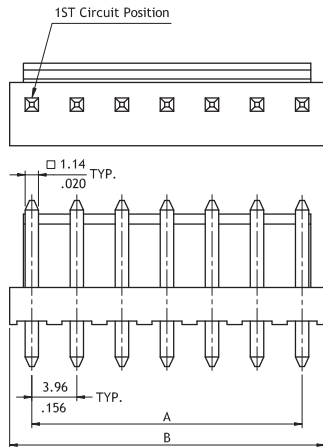
CI52 Series 3.96mm(.156") Wire to Board Connectors DIP Headers

- ⊙ With locking wall
- ⊙ Mate with CI52 Housing
- ⊙ Insulator: Polyamide UL 94V-0, Color Nature
- ⊙ With Tin plated 1.14mm square pin

RoHS Compliant

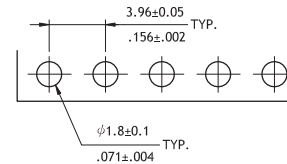
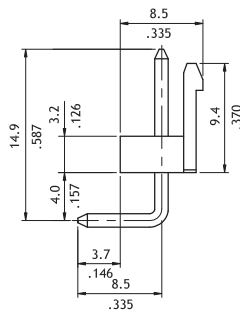
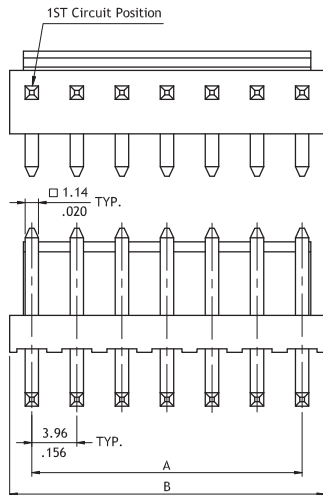


P/N CI52**P1V00-LF



Circuits	Dimension	
	A	B
2	3.96(.156)	7.8(.307)
3	7.92(.312)	11.8(.465)
4	11.88(.468)	15.8(.622)
5	15.84(.624)	19.7(.776)
6	19.80(.780)	23.7(.933)
7	23.76(.936)	27.6(1.087)
8	27.72(1.091)	31.6(1.244)
9	31.68(1.247)	35.5(1.398)
10	35.64(1.403)	39.5(1.555)
11	39.60(1.559)	43.5(1.713)
12	43.56(1.715)	47.4(1.866)
13	47.52(1.871)	51.4(2.024)

P/N CI52**P1H00-LF



Recommended PCB Layout

Ordering Code

① ② ③ ④ ⑤ ⑥ ⑦
C I 5 2 1 3 P 1 V 0 0 - L F

- ① Series No.
- ② No. of Circuits: 02 to 13
- ③ P = DIP Header
- ④ Plating Code: 1 = Tin over Nickel
- ⑤ Type: V = Straight
H = Right Angle

- ⑥ Other Options:
00 = Standard
*Special options consult manufacturer
- ⑦ Process: -LF = For Lead Free soldering process