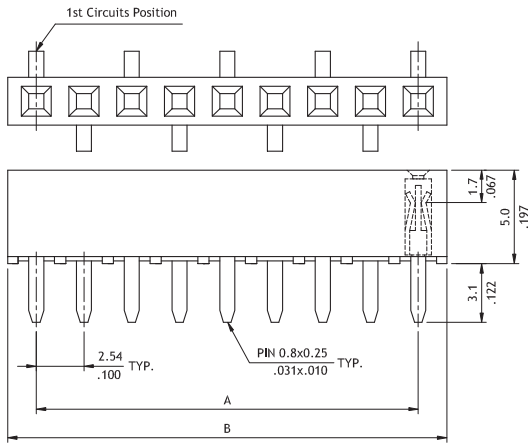


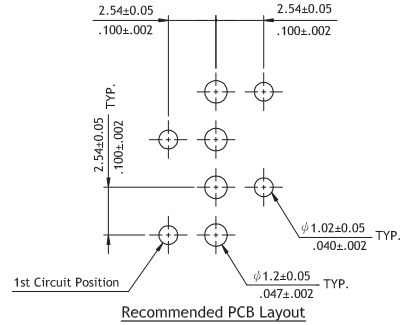
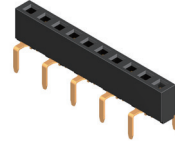
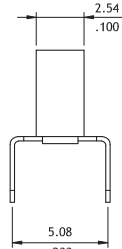
**CB33 Series 2.54mm(.100") Single Row Dual Entry Female Header**

Ⓞ Mates with CH31 and CH34 series

RoHS Compliant



$A = 2.54 * \text{No. of Spaces}$   
 $B = A + 3.14$



**Ordering Code**

①	②	③	④	⑤	⑥
CB33	40	2	R	1	00

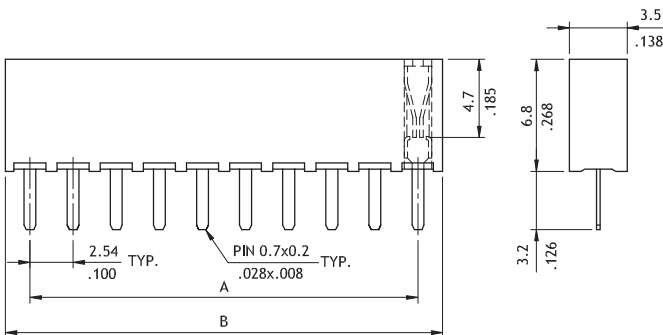
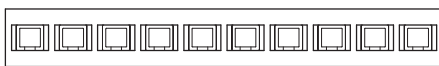
- ① Series No.
- ② No. of Circuits: 02 to 40
- ③ Plating Code:  
2 = Gold flash over Nickel
- ④ Tail Style: R = Dual Entries

- ⑤ Color: 1 = Black
- ⑥ Other Options:  
00 = Standard  
\*Special options consult manufacturer

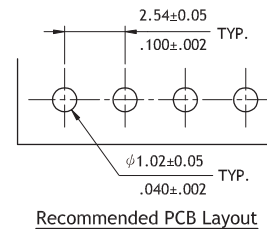
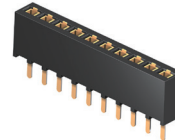
**CB37 Series 2.54mm(.100") Single Row Female Headers**

Ⓞ Mates with CH31 and CH34 series

RoHS Compliant



$A = 2.54 * \text{No. of Spaces}$   
 $B = A + 2.5$



**Ordering Code**

①	②	③	④	⑤	⑥
CB37	40	A	V	1	00

- ① Series No.
- ② No. of Circuits: 02 to 40
- ③ Plating Code: A = Selective Gold flash over Nickel
- ④ Tail Style: V = Vertical

- ⑤ Color: 1 = Black
- ⑥ Other Options: 00 = Standard  
\* Special options consult manufacturer