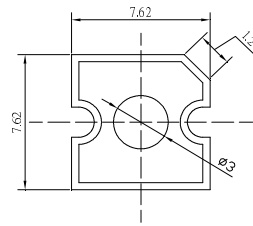


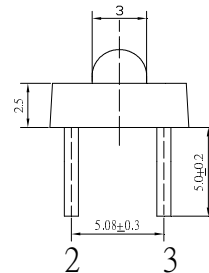
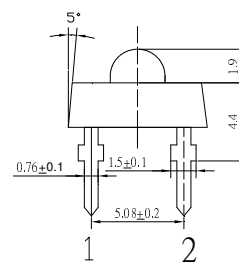
■Features

- High Luminous Super Flux Output
- 3 ϕ Standard Directivity
- Superior Weather-resistance
- UV Resistant Epoxy
- Long Lifetime Operation
- Water Clear Type

■Applications

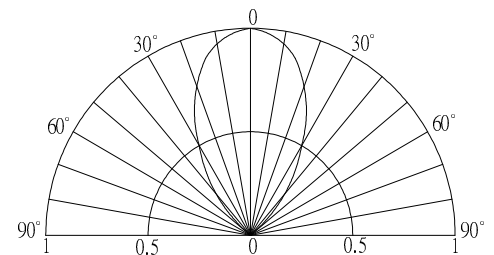
- General Purpose Indicators
- Small Area Illuminations
- Back Lighting
- Other Lighting

■Outline Dimension

 Unit:mm
 Tolerance: ± 0.3 mm

 1,4 Anode
 2,3 Cathode

■Absolute Maximum Rating

(Ta=25°C)

Item	Symbol	Value	Unit
DC Forward Current	I_F	30	mA
Pulse Forward Current*	I_{FP}	100	mA
Reverse Voltage	V_R	5	V
Power Dissipation	P_D	108	mW
Operating Temperature	T_{opr}	-30 ~ +85	°C
Storage Temperature	T_{stg}	-40 ~ +100	°C
Lead Soldering Temperature	T_{sol}	260°C / 5sec	-

■Directivity


*Pulse width Max.10ms , Duty ratio max 1/10

■Electrical -Optical Characteristics

(Ta=25°C)

Item	Symbol	Condition	Min.	Typ.	Max.	Unit
DC Forward Voltage	V_F	$I_F=30$ mA	2.9	3.1	3.6	V
DC Reverse Current	I_R	$V_R=5$ V	-	-	10	μ A
Luminous Intensity*	I_v	$I_F=30$ mA	2180	3000	-	mcd
Color Temperature	CCT	$I_F=30$ mA	-	6500	-	K
Chromaticity Coordinate*	x	$I_F=30$ mA	-	0.31	-	
	y	$I_F=30$ mA	-	0.33	-	
50% Power Angle	$2\theta_{1/2}$	$I_F=30$ mA	-	60	-	deg

 *1 Tolerance of chromaticity coordinate is $\pm 10\%$

 *2 Tolerance of luminous intensity is $\pm 15\%$