



GBJ25005 THRU GBJ2510

**Single Phase 25 AMPS.
Glass Passivated Bridge Rectifiers**

**Voltage Range
50 to 1000 Volts
Current
25 Amperes**

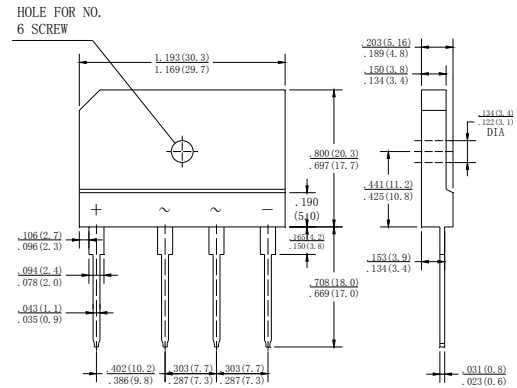
Features

- UL Recognized File # E-230084
- Ideal for printed circuit board
- Reliable low cost construction technique results in inexpensive product
- High temperature soldering guaranteed: 260°C / 10 seconds / 0.375" (9.5mm) lead length at 5 lbs., (2.3 kg) tension

Mechanical Data

- Case: Molded plastic
- Lead: solder plated
- Polarity: As marked

KBJ6



Dimensions in inches and (millimeters)

MAXIMUM RATINGS AND ELECTRICAL CHARACTERISTICS

Rating at 25°C ambient temperature unless otherwise specified.

Single phase, half wave, 60 Hz, resistive or inductive load.

For capacitive load, derate current by 20%

Type Number		GBJ 25005	GBJ 2501	GBJ 2502	GBJ 2504	GBJ 2506	GBJ 2508	GBJ 2510	UNITS
Maximum Repetitive Peak Reverse Voltage	V _{RRM}	50	100	200	400	600	800	1000	V
Maximum RMS Voltage	V _{RMS}	35	70	140	280	420	560	700	V
Maximum DC blocking Voltage	V _{DC}	50	100	200	400	600	800	1000	V
Maximum Average Forward Rectified Current See Fig.2	I(AV)	25							A
Peak Forward Surge Current, 8.3 ms Single Half Sine-wave Superimposed on Rated Load (JEDEC method)	I _{FSM}	300							A
Maximum Instantaneous Forward Voltage @ 25A	V _F	1.1							V
Maximum DC Reverse Current @ TA=25°C rated DC blocking voltage per leg TA = 125°C	I _R	10 500							μ A
Typical Thermal Resistance (Note)	R θ _{JC}	0.6							°C/W
Operating Temperature Range	T _J	-55 to +150							°C
Storage Temperature Range	T _{STG}	-55 to +150							°C

NOTE: Thermal Resistance from Junction to Case with Device Mounted on 300×300×1.6mm Cu Plate Heatsink

RATING AND CHARACTERISTIC CURVES

GBJ25005 THRU GBJ2510



FIG.1-MAXIMUM NONO-REPETITIVE FORWARD SURGE CURRENT PER BRIDGE ELELMENT

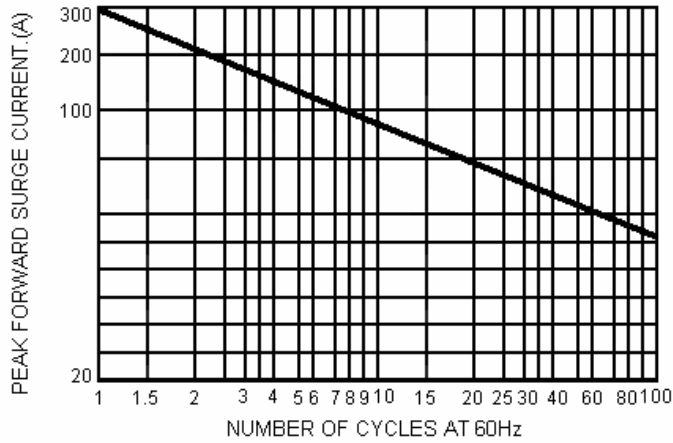


FIG.2-MAXIMUM FORWARD CURRENT DERATING CURVE

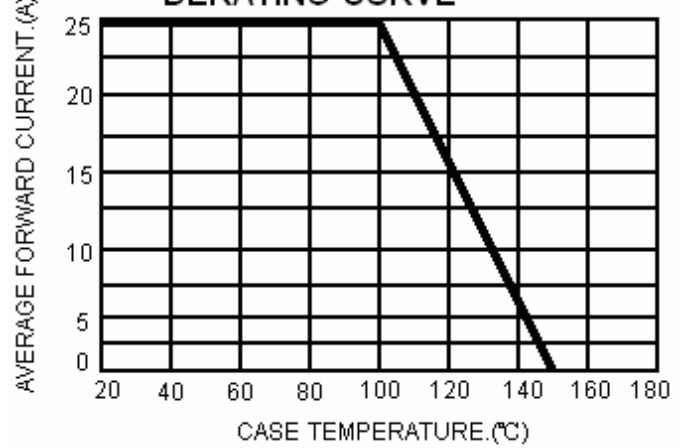


FIG.3-TYPICAL INSTANTANEOUS FORWARD CHARACTERISTICS PER BRIDGE ELEMENT

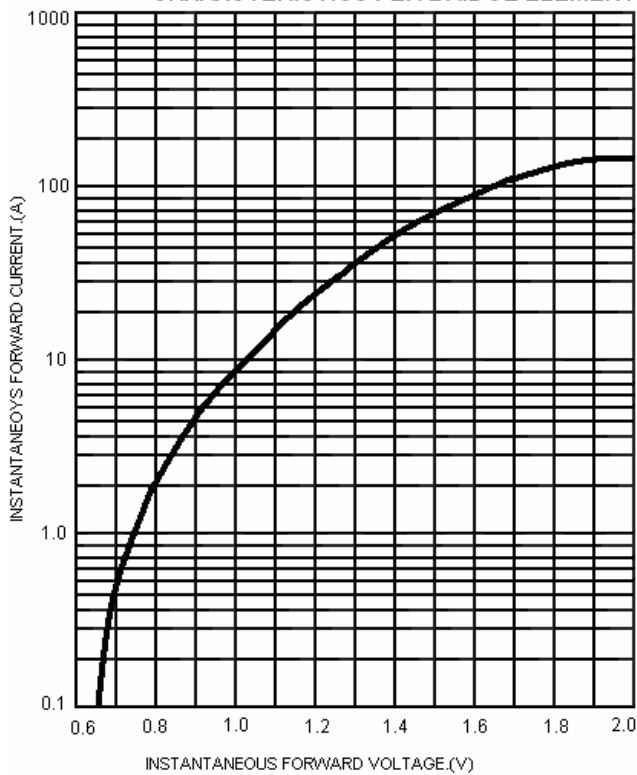


FIG.4-TYPICAL REVERSE CHARACTERISTICS PER BRIDGE ELEMENT

