



**21mm Snap-In Rotary Potentiometer (21mm 嵌入式旋轉電位器)**

**RK-2122G (Dual Units)**

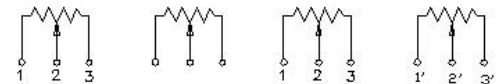
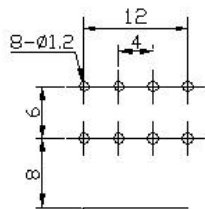
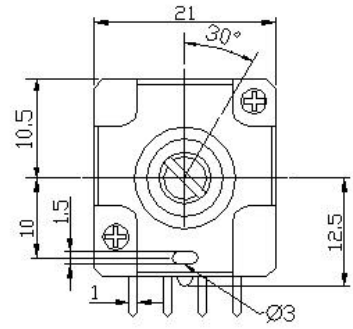
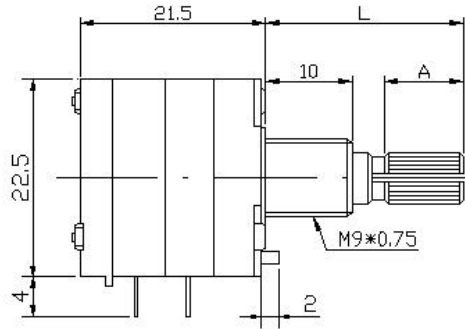


**Part Number**

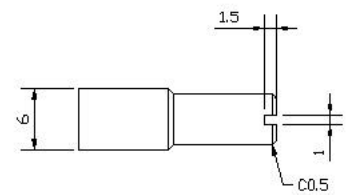
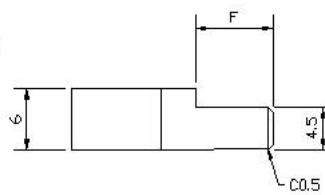
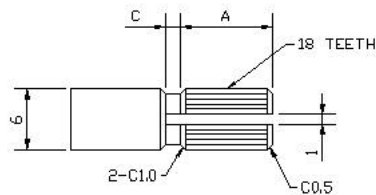
**RK-2122G - B 50K, L - 20 KC**

Taper      Resistance Value      Shaft Type  
 線性      阻值      軸型  
 Shaft Length  
 軸長

**Dimensions 規格尺寸**



**Shaft Type 軸型**



KC	L	20	25	30
	A	7	10	12
	C	1	2	4
F	L	20	25	30
	F	7	12	12
RE	L	20	25	30



**21mm Snap-In Rotary Potentiometer (21mm 嵌入式旋轉電位器)**

**Electrical Characteristics 電氣特性**

All Resistance 總阻值	10K ~ 1M
All Resistance Tolerance 總阻值誤差	± 20%
Resistance Taper 線性	A. B Taper
Resistance Taper Characteristics 阻值變化特性範圍	A 50% → 15-25% B 50% → 40-60%
Rated Power 定格電力	0.05W
Residual Resistance 殘留阻值	R <sup>3</sup> 250K 0.1% 250K > R > 10K 20 Max. ( between Term. 1, 2) 10K <sup>3</sup> R 20 Max. ( between Term. 1, 2)
Gang Error 聯動誤差	-50dB 1.5dB Other 3dB
Noise 雜音	100 mV Max.
Insulation Resistance 絕緣阻抗	DC 500V 100M
Withstand Voltage 耐電壓	1 minute at AC 500V
Rotational Life 旋轉壽命	15,000 Cycles

**Mechanical Characteristics 機械特性**

Total Rotational Angle 全迴轉角度	300° ± 5°
Stopper Strength 全迴轉止強度	7 kgf.cm max./ 3 sec.
Operating Force 全迴轉力距	30 ~ 250gf.cm
Push-Pull Strength 壓入拉起強度	8 kgf.cm Max. / 3 sec.
Shaft Wobble 軸心搖晃接受力	0.7 x L / 30 mmp-p max.
Solder Heat 焊錫耐熱性	300 , 3s. (only for Hand-Soldering)
Remark 備註	Shaft: Aluminum Zinc Bushing Material: Cast Iron