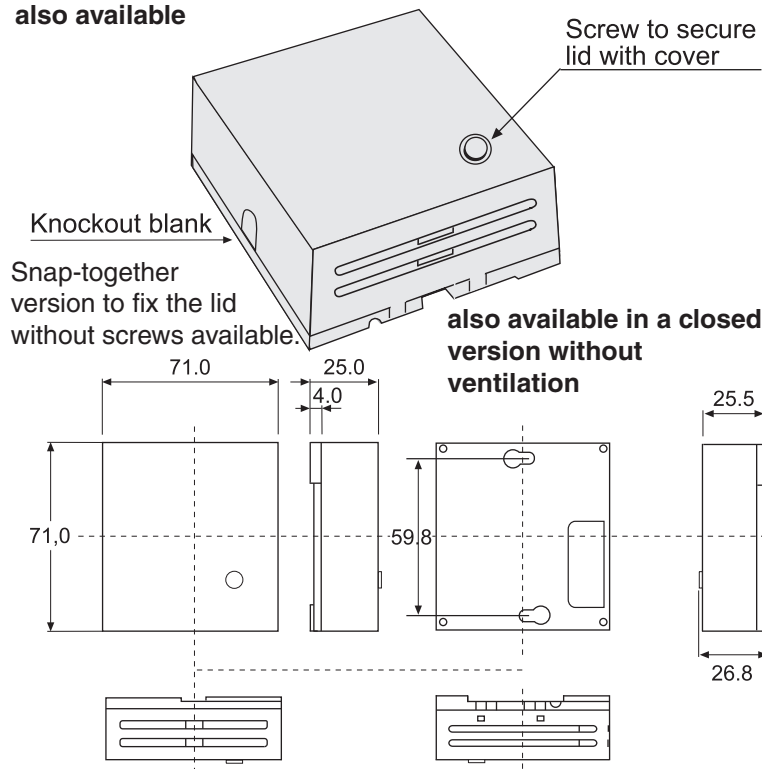


# ENCLOSURE FOR WALL MOUNTING

## SERIES 301

NEW designed version with concave front  
also available



Enclosure for wall mounting. Suitable for sensors etc. Possibility for 2 PCB's. PCB and packing are available. Standard colour is white/white but other colours can be supplied upon request.

PCB and packing are available.

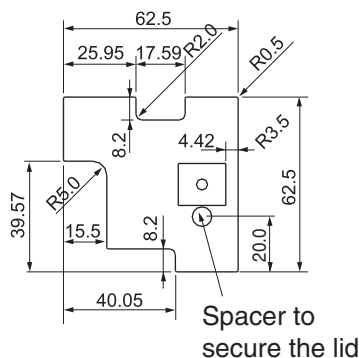
### TECHNICAL DATA:

Top part: Cycoloy C 2800  
Base part: Cycoloy C 2800  
Colour: White/white (RAL9010/RAL 9010)  
Temperature range: -30 - +100°C  
Self-extinguishing: Acc. to UL94-V0

Base part with battery holder for 2 pcs AAA-batteries available.

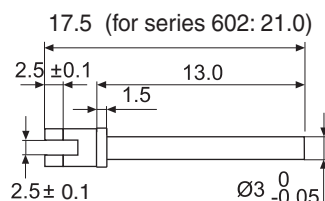
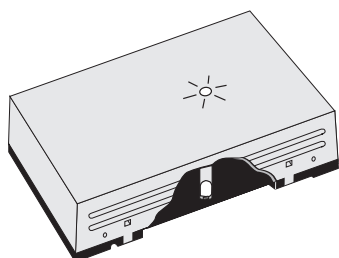
TYPE 301	ORDER CODE:
Complete: Top+base+1 screw	
+bushing + 2 blind covers	p/n 0669001301
Packing	p/n 2068300004
Raw PCB	p/n 4999000300
Light conductor	p/n 4972001258
Push button switch	p/n 4955127313

### PCB DIMENSIONS



Possibility for integrated battery holder for wireless applications.

## LIGHT CONDUCTOR for 300, 301, 600, 601 and 602



Can be used with SMD or leaded Ø3 mm LED's. Material: Clear PC

LIGHT CONDUCTOR	ORDER CODE:
For 300, 301, 600 and 601	p/n 4972001258
For 602	p/n 4972001257