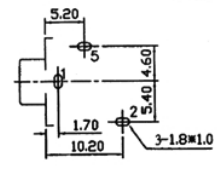
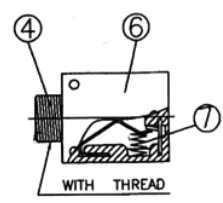
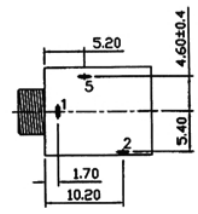
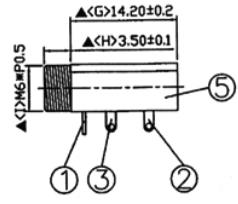
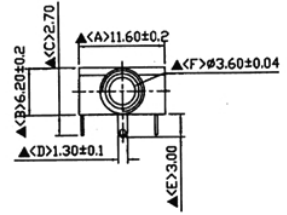


NUT



Pin Hole Layout
(Jack Bottom View)



SPECIFICATIONS:
 Contact Resistance : 30mΩ max
 Insulation Resistance : 100MΩ min. at DC 500V
 Dielectric Withstand Voltage : AC 500V for one minute
 Remark: ▲ : The Most Important Dimension

8	NUT	1.50T Brass	1	Nickel plated
7	Spring	SUS-304	1	
6	Cover	PC	1	Trans Parent
5	Housing	POM	1	Black Color
4	Barrel(W/Thread)	Brass	1	Nickel plated
3	Tip Spring	0.25T Phosphor Bronze	1	Silver Plated
2	Ring Spring	0.25T Phosphor Bronze	1	Silver Plated
1	Earth Terminal	0.4T Brass	1	Silver Plated
NO	Description	Material	QTY	Finish

NOTE: (1)UNLESS OTHERWISE SPECIFIED · DIMENSIONS ARE IN MILLIMETERS ·
 (2)RESERVE THE RIGHT OF MODIFICATION WITHOUT PRE-NOTIFICATION ·