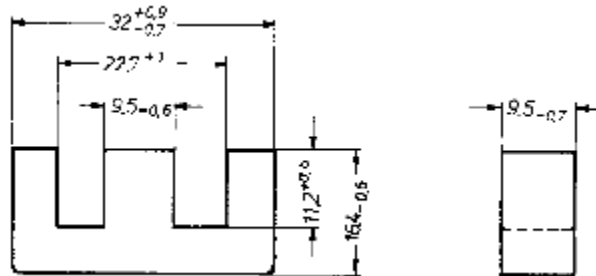




E-KERN E 32/9 (EF 32/9,5)
E CORE E 32/9 (EF 32/9.5)



209

Magn. Formkenngrößen/Satz / Effective magn. parameters/set

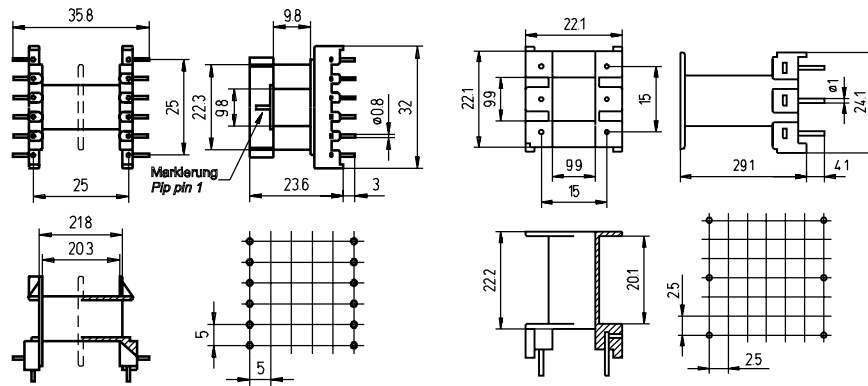
Formfaktor Core factor	C_1	=	0.89	mm ⁻¹
Eff. magn. Weglänge Eff. magn. path length	l_e	=	74.0	mm
Eff. magn. Querschnitt Eff. magn. cross-section	A_e	=	83.0	mm ²
Min. Kernquerschnitt Min. core cross-section	A_{min}	=	81.0	mm ²
Eff. magn. Volumen Eff. magn. volume	V_e	=	6200	mm ³
Gewicht Weight	G	=	32.0	g

A_L -Wert A_L value nH	Toleranz tolerance %	Werkstoff material	Luftspalt air gap mm	Bestellnummer order number
2200	±25	K2004		320 320 900 024
2300	±25	K2006		320 320 900 026
4200	±25	K4000		320 320 900 004
410		K2004	0.20	320 320 920 024
230		K2004	0.50	320 320 950 024
150		K2004	1.00	322 320 910 024

Bei Anwendung in Leistungsübertragern / For application in power transformers
 Meßfrequenz / Test frequency $f = 16 \text{ kHz}, 25 \text{ kHz}$ ¹⁾

Temperatur temperature °C	Induktion induction mT	Feldstärke field strength A/m	Verluste W/Satz / losses W/set K2004	Verluste W/set / losses W/set K2006 ¹⁾
25	200		0.74	0.99
100	200		0.62	0.74
100	100	50		
100	330	250		

SPULENKÖRPER E 32/9 (EF 32/9,5) COIL FORMER E 32/9 (EF 32/9.5)



liegend / horizontal

[mm]

stehend / vertical

[mm]

liegend horizontal	Bezeichnung / Designation	
	SP-E 32 - 1352	SP-E 32 - 1481
Kammeranzahl Number of sections	1	2
A_N in mm ²	108.6	103.3
l_N in mm	65.5	65.5
max. Stifanzahl max. number of pins	12	12
Bestell-Nr. Order no.	501 320 910 12A	501 320 920 12U

stehend vertical	Bezeichnung / Designation	
	SP-E 32 - 1353	
Kammeranzahl Number of sections	1	
A_N in mm ²	104.5	
l_N in mm	65.4	
max. Stifanzahl max. number of pins	6	
Bestell-Nr. Order no.	501 320 910 11A	

Standardmaterial / Standard material: Polyamid(e)