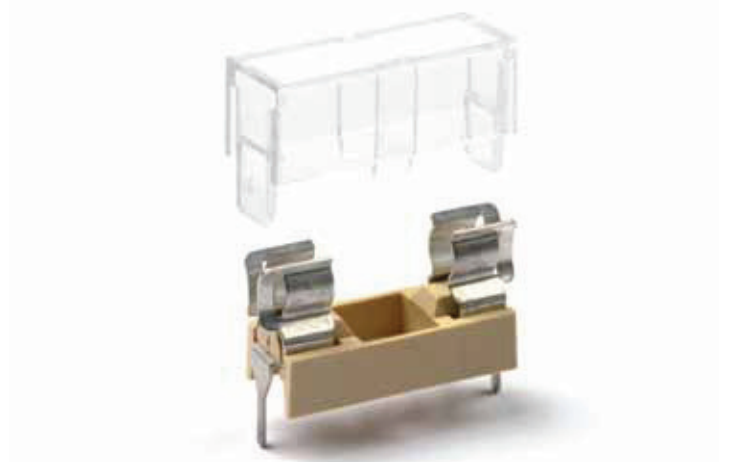


**PORTAFUSIBILI NON PROTETTI PER CS  
FUSEHOLDER BLOCKS FOR PCB**

**PTF/15**



**FUSIBILE TIPO  
FUSE LINK**                      **5 x 20 mm**

**MONTAGGIO  
MOUNTING**                      **CS  
PCB**



Corrente nominale <b>Rated Current</b>	A	6,3
Tensione nominale <b>Rated Voltage</b>	VAC	250
Potenza dissipabile <b>Rated Power Acceptance</b>	W	1,6

Corpo isolante <b>Housing</b>	—	PPOM - UL 94 V1
Temperatura ambiente ammissibile <b>Admissible ambient air temperature</b>	°C	-30 °C to 85 °C
Protezione contro le scosse elettriche <b>Shocksafe category</b>	PC	PC1
Grado di protezione <b>Degree of protection</b>	IP	IP00
Resistenza di contatto <b>Contact Resistance</b>	mΩ	< 5

 EN 60127-6	Corrente Nominale <b>Rated Current</b>	A	6,3
	Tensione nominale <b>Rated Voltage</b>	VAC	250
	Potenza dissipabile <b>Rated Power Acceptance</b>	W	1,6
 UL 512 + C22.2 no. 39	Corrente Nominale <b>Rated Current</b>	A	10
	Tensione nominale <b>Rated Voltage</b>	VAC	250
	Potenza dissipabile <b>Rated Power Acceptance</b>	W	—

Colore standard <b>Standard colour</b>	—	giallo - yellow
Altri colori <b>Other colours</b>	—	A richiesta - On demand
Accessori <b>Accessories</b>	Pag	sezione A3 - section A3
Altri dati <b>Other information</b>	Pag	sezione B/A1- section B/A1

