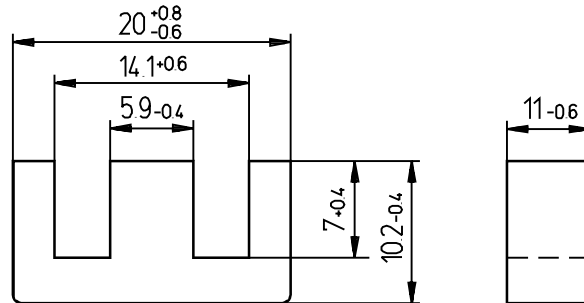




E-KERN E 20/11
E CORE E 20/11



507

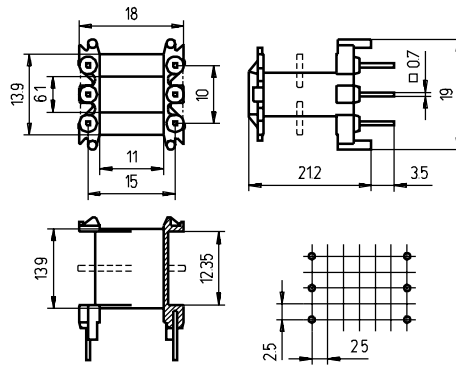
Magn. Formkenngrößen/Satz / Effective magn. parameters/set

Formfaktor Core factor	C_1	=	0.77	mm ⁻¹
Eff. magn. Weglänge Eff. magn. path length	l_e	=	46.0	mm
Eff. magn. Querschnitt Eff. magn. cross-section	A_e	=	60.0	mm ²
Min. Kernquerschnitt Min. core cross-section	A_{min}	=	58.5	mm ²
Eff. magn. Volumen Eff. magn. volume	V_e	=	2750	mm ³
Gewicht Weight	G	=	13.0	g

A_L -Wert A_L value nH	Toleranz tolerance %	Werkstoff material	Luftspalt air gap mm	Bestellnummer order number
2600	±25	K2006		320 201 100 026
125		K2006	0.80	320 201 180 026
90		K2006	1.20	320 201 112 026

Bei Anwendung in Leistungsübertragern / For application in power transformers Meßfrequenz / Test frequency $f = 25$ kHz			
Temperatur temperature °C	Induktion induction mT	Feldstärke field strength A/m	Verluste W/Satz / losses W/set K2004
25	200		0.42
100	200		0.31
100	100	50	
100	330	250	

SPULENKÖRPER E 20/11
COIL FORMER E 20/11



[mm]

	Bezeichnung / Designation	
	SP-E 20/11 - 1447	SP-E 20/11 - 1543
Kammeranzahl Number of sections	1	2
A_N in mm ²	31.5	31.5
l_N in mm	49.3	49.3
max. Stiftanzahl max. number of pins	6	6
Bestell-Nr. Order no.	500 201 110 117	500 201 120 117

Standardmaterial / Standard material : Polyamid(e)