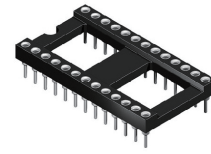
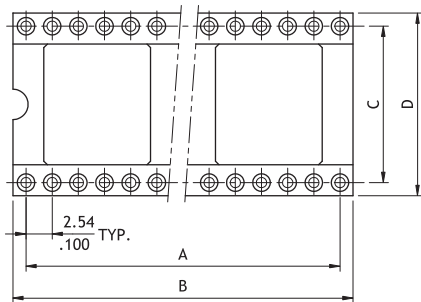


CS07 Series 2.54mm (.100") DIP Socket - Machined contacts

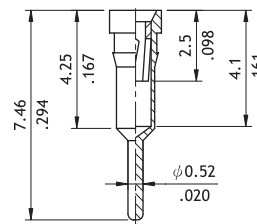
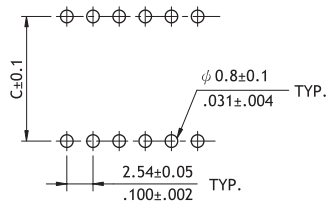
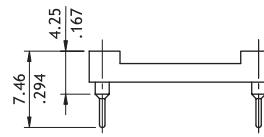
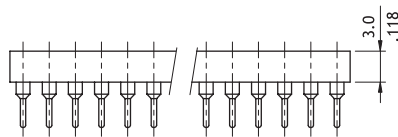
- ⊙ High reliability screwed machined terminals with multiple finger contacts
- ⊙ Sealed and prevent flux wicking
- ⊙ Insulator: Glass filled polyester
- ⊙ Contact: Gold plated Beryllium copper
- ⊙ Sleeve: Tin plated copper alloy



RoHS Compliant



Circuits	CviLux P/N	Dimension			
		A	B	C	D
6	CS0706D1000	5.08(.200)	7.62(.300)	7.62(.300)	10.04(.395)
8	CS0708D1000	7.62(.300)	10.16(.400)	7.62(.300)	10.04(.395)
14	CS0714D1000	15.24(.600)	17.78(.700)	7.62(.300)	10.04(.395)
16	CS0716D1000	17.78(.700)	20.32(.800)	7.62(.300)	10.04(.395)
18	CS0718D1000	20.32(.800)	22.86(.900)	7.62(.300)	10.04(.395)
20	CS0720D1000	22.86(.900)	25.40(1.000)	7.62(.300)	10.04(.395)
24	CS0724D1000	27.94(1.100)	30.48(1.200)	7.62(.300)	10.04(.395)
	CS0724D1A00			15.24(.600)	17.72(.698)
28	CS0728D1000	33.02(1.300)	35.56(1.400)	7.62(.300)	10.04(.395)
	CS0728D1A00			15.24(.600)	17.72(.698)
32	CS0732D1A00	38.10(1.500)	40.64(1.600)	15.24(.600)	17.72(.698)
40	CS0740D1A00	48.26(1.900)	50.80(2.000)	15.24(.600)	17.72(.698)
42	CS0742D1A00	50.80(2.000)	53.34(2.100)	15.24(.600)	17.72(.698)
48	CS0748D1A00	58.42(2.300)	60.96(2.400)	15.24(.600)	17.72(.698)



Recommended P.C. Board Layout

Pin detail

Ordering Code

① CS 07 ② 48 ③ D ④ 1 ⑤ 000

- ① Series No.
- ② No. of Circuits: See above table
- ③ Plating Code:
D = Tin plated sleeve with 10µ in Gold plated contact

- ④ Color: 1 = Black
- ⑤ Other Options:
000 = DIM.D: 10.04mm
A00 = DIM.D: 17.72mm
*Special options consult manufacturer