

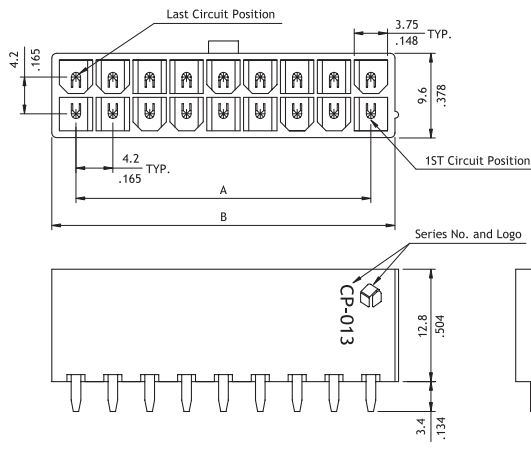
CP-013 Series 4.20mm (.165") Straight DIP Solder Headers

- ⊙ Optional PCB mounting pegs
- ⊙ Mates with CP-011 connector
- ⊙ Nylon 66 UL 94V-0 or V-2 insulator material
- ⊙ Glow wire test material available

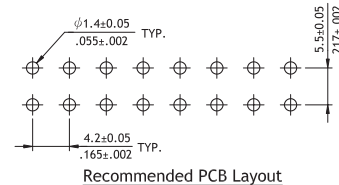


RoHS Compliant

P/N CP-013**110 / CP-013**130 / CP-013**1E0

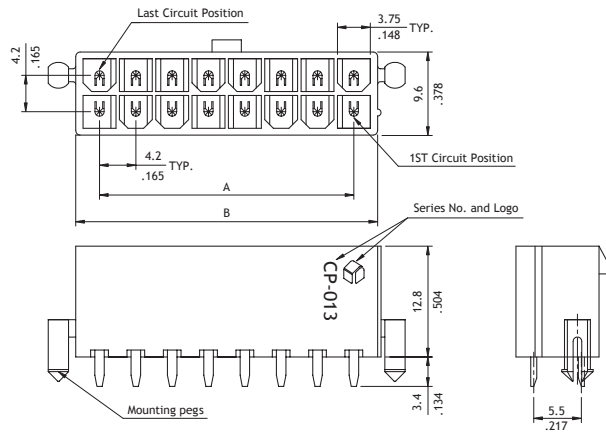


Circuits	Dimension	
	A	B
2	-	5.5(.217)
4	4.2(.165)	9.7(.382)
6	8.4(.331)	13.9(.547)
8	12.6(.496)	18.1(.713)
10	16.8(.661)	22.3(.878)
12	21.0(.827)	26.5(1.043)
14	25.2(.992)	30.7(1.209)
16	29.4(1.157)	34.9(1.374)
18	33.6(1.322)	39.1(1.539)
20	37.8(1.487)	43.3(1.705)
22	42.0(1.652)	47.5(1.870)
24	46.2(1.817)	51.7(2.035)

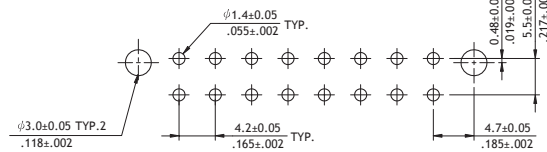


Recommended PCB Layout

P/N CP-013**140 / CP-013**150 / CP-013**1G0



Circuits	Dimension	
	A	B
2	-	5.5(.217)
4	4.2(.165)	9.7(.382)
6	8.4(.331)	13.9(.547)
8	12.6(.496)	18.1(.713)
10	16.8(.661)	22.3(.878)
12	21.0(.827)	26.5(1.043)
14	25.2(.992)	30.7(1.209)
16	29.4(1.157)	34.9(1.374)
18	33.6(1.322)	39.1(1.539)
20	37.8(1.487)	43.3(1.705)
22	42.0(1.652)	47.5(1.870)
24	46.2(1.817)	51.7(2.035)



Recommended PCB Layout

Ordering Code

① ② ③ ④ ⑤ ⑥
CP - 01 3 2 4 1 1 0

- ① Series No.
- ② Connector Type:
3 = Straight PCB mount header
- ③ No. of Circuits:
see above table
- ④ Plating: 1 = Tin over Nickel
- ⑤ Variation:
1 = UL 94V-2 (without mounting peg)
3 = UL 94V-0 (without mounting peg)
4 = UL 94V-2 (with mounting pegs)
5 = UL 94V-0 (with mounting pegs)
E = GWT approval (without mounting peg)
G = GWT approval (with mounting pegs)
- ⑥ Other Options:
0 = Standard (with drain holes shown, non for 2 pin Type)
H = Without drain hole
*Special options consult manufacturer