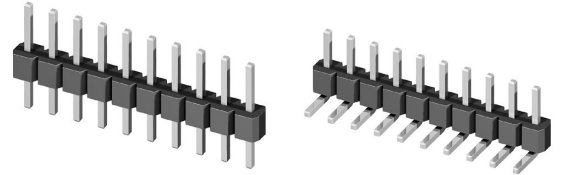


CH11 Series 2.00mm(.079") Single Row Pin Headers

- Mates with CB22
- Lead Free soldering process available

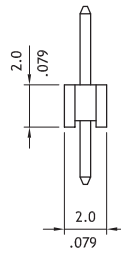
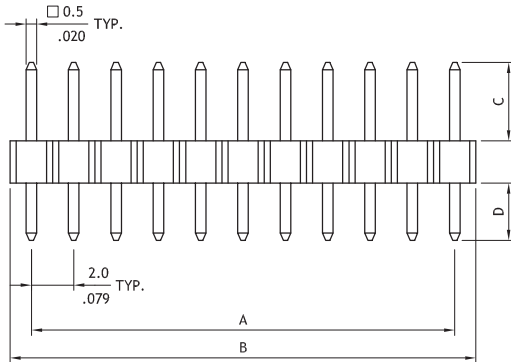
RoHS Compliant



UL **UL** :E159616

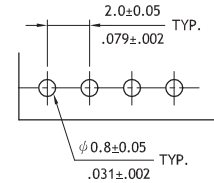


A = 2.0 x No. of Spaces
B = A + 2.0

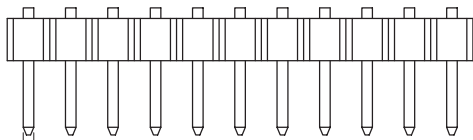


HN1X20-2.0

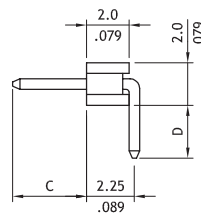
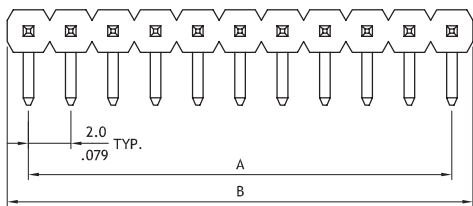
Option Code	Pin Dimension	
	C	D
00	3.9(.154)	2.8(.110)
01	6.8(.268)	3.0(.118)
02	9.0(.354)	2.0(.079)
03	8.0(.315)	3.0(.118)



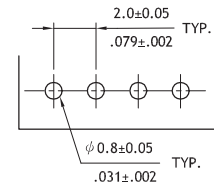
Recommended P.C. Board Layout



A = 2.0 x No. of Spaces
B = A + 2.0



Option Code	Pin Dimension	
	C	D
00	2.5(.098)	2.5(.098)



Recommended P.C. Board Layout

Ordering Code

1 **2** **3** **4** **5** **6**
CH 1 1 4 0 2 V 1 0 0

- 1** Series No.
- 2** Circuits: 02 to 40
- 3** Plating code: 2= Gold flash over Nickel
*Optional plating available but MOQ requested
- 4** Tail & Mounting Style: V= Vertical DIP type
H= Right Angle DIP type
- 5** Color : 1= Black
- 6** Other options: 00= Standard
* See option code table
* Consult manufacturer for customized pin length