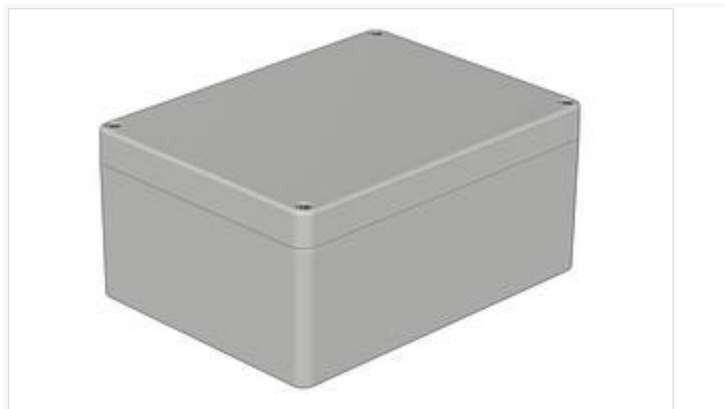


# Euromas ABS / PC / F05

Enclosure, ABS



T 2381

Order no.: 03238200

\* = Available on request.

## Characteristics

Colour of enclosure group

Light grey

Protection class

IP 66

Enclosure Material

ABS, PC (UV stabilised) and selected sizes in PC UL 94 V0 (additional UL 94 V0 versions on request), seal made of CR; V215: Vestamid, CR seal; for details see Technical Information

Scope of delivery

Lid and base, lid screws made of V2A, self-tapping screws for mounting bosses

Note

SV = version with quick-release fastener.

IP = Ingress protection acc. to DIN EN 60529

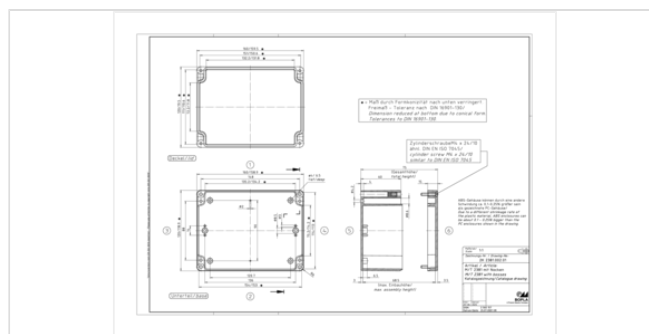
Material shrinkage may result in ABS enclosures being approx. 0.1 - 0.25 % larger.

## Dimensions

Dimensions

160 x 120 x 75 mm

Product drawing



## Technical documentation / Downloads

## Technical drawings

3D product data in STEP format: 03238200 T-2381.stp (765.3 KB)

Drawing for mechanical processing: 03238200 T-2381-G.dxf (709.9 KB)

Milling contours are shown here as a DXF file. (Sub D, USB, HDMI, cable glands, ...)

Product drawing in PDF format: 03238200 T-2381.pdf (90.1 KB)

Product drawing in DXF format: 03238200 T-2381.dxf (673.1 KB)

## Works Test Certificates

670 WPZ-Euomas-PC DE.pdf (197.3 KB)

670 WPZ-Euomas-PC EN.pdf (191.1 KB)

## Product information

euomas-abs-pc-f05 en.pdf (1.1 MB)

## Important!

---

To compensate for pressure when temperatures change and cause moisture in the enclosure, we recommend that you use a pressure compensation element.

» Additional information

## Matching accessories

---



### Mast mounting, stainless steel V2A, uncoated

96500122 MH 122

96500167 MH 167



### Mounting panels, laminated paper

22001100 M

For EM/ET 238, M/T 238, M/T 246



### Wall brackets on rear, screw-on, polycarbonate

22004900 WL

For M/T 210-243, M/T 246-253



### DIN rails DIN EN 60715 TH 15, galvanised steel

22002000 TS 15

For M/T 219-220, M/T 231-235, M/T 238,  
M/T 246, P 325, M/T 2381



### DIN rails DIN EN 60715 G 32, galvanised steel

22002010 TS 32

For M/T 219-220, M/T 231-235, M/T 238,  
M/T 246, P 316, P 325, M/T 2381



#### Threaded inserts for mounting bosses

59002810 DODGE M3x6,5 ND = 4.0 x 6.5  
59002820 DODGE M4x9,5 ND = 5.4 x 9.5



#### Rubber feet, plug-in

22003300 F For M/T 208-260



#### Knurled screws

22003310 RD For M/T 241, M/T 243



#### DIN rails DIN EN 60715 TH 35, galvanised steel

22002020 TS 35 For M/T 219-220, M/T 231-235, M/T 238,  
M/T 246, P 316, P 325, M/T 2381



#### Screws (SHR) and distance bolts (DIBLZ) for mounting bosses in plastic enclosures

59006101 SHR Z B4,5x7,8 SD = 4.5 / ND = 4.0 / KD = 7.5