

1	2	3	4	5	6	7	8	9	10
SWITCH CIRCUIT			MATERIAL AND FINISH AS BELOW						
WHEN CARD IS EJECTED		WHEN CARD IS INSERTED		A	Housing	LCP UL94V-0, Black	E		
				B	Contact	Phosphor Bronze C5210, Contact Area:Gold Flash Over Nickel	F		
				C	Holddown	Brass C2680, Tin Plated	G		
				D			H		

SPECIFICATION:

1. ELECTRICAL

- 1.1 Current Rating: 0.5A per pin
- 1.2 Voltage Rating: 50V DC
- 1.3 Contact Resistance: 55mΩ Max
- 1.4 Insulation Resistance: 500MΩ Min
- 1.5 Dielectric Withstanding Voltage: 300VAC

2. MECHANICAL

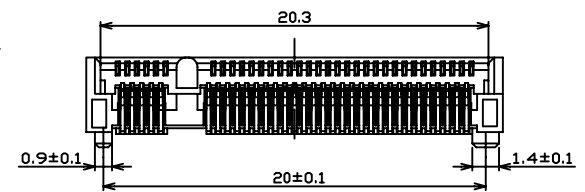
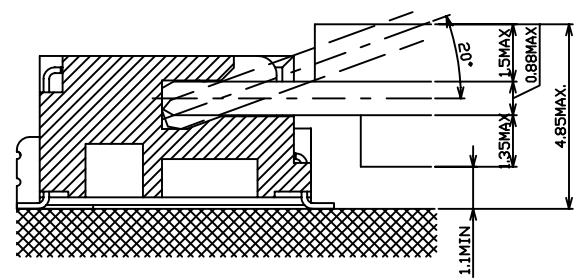
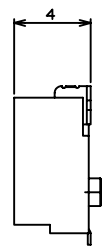
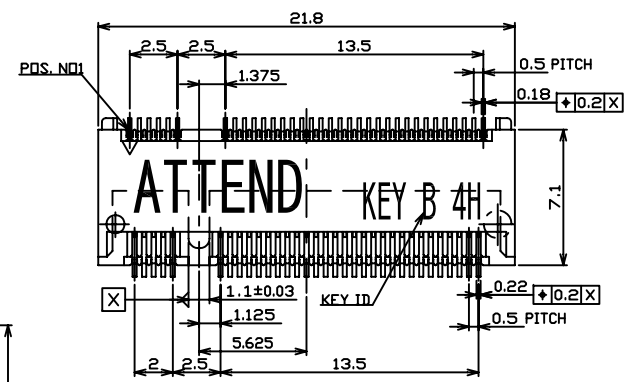
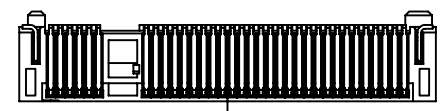
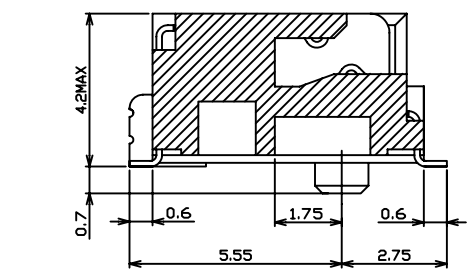
- 2.1 Durability: 200 Cycle
- 2.2 Insertion Force: 20N max.
- 2.3 Extraction Force: 25N max.

3. ENVIRONMENTAL

- 3.1 Operating temperature range: -40°C~+85°C
- 3.2 Storage temperature range: -40°C~+85°C

4. SOLDER ABILITY

- 4.1 Recommended IR Reflow Temperature: 260°C 10Sec
- 4.2 Recommended PCB Thickness: 1.0mm



P1	P2	P3	P4	P5	P6	P7	P8	P9	P10	P11	P12
PIN ASSIGNMENT											
123A-42BA0-R01			M.2 Connector, Key B Type Pitch:0.50mm H:4.2mm, Contact Area:Gold Flash								
PRODUCT NO.			DESCRIPTION								

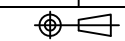
UNLESS OTHERWISE SPECIFIED TOLERANCE		
ANGLES	ANG.	±5°
LINEAR	0.	±0.3
	0.0	±0.25
	0.00	±0.20
SCALE	AS SHOWN	UNIT: mm
DRAWN	Willis	2013/12/09
CHECKED	Angel	2013/12/09
APPROVED	Ken	2013/12/09



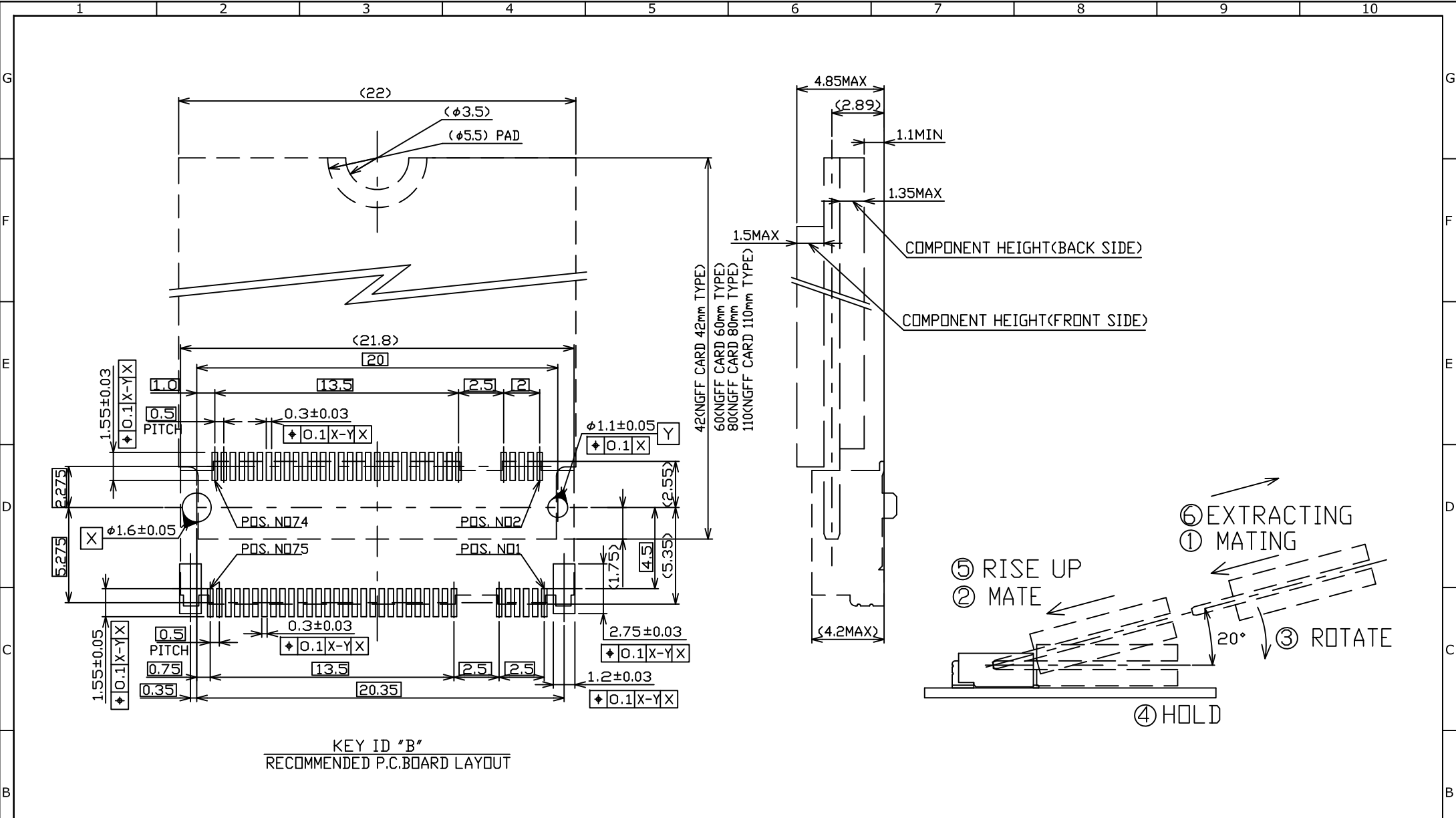
www.attend.com.tw	
DRAWN NAME: M.2 Connector Key B H:4.2mm	
PRODUCT NO.	123A-42BA0-R01
FILE NAME	123A-42BA0-R01_B_1

REV.	DESCRIPTION	DATE	REV.	DESCRIPTION	DATE

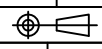
- 3 Revise:
- 2 Revise:
- 1 Revise:



SIZE A4 REV. 1.0

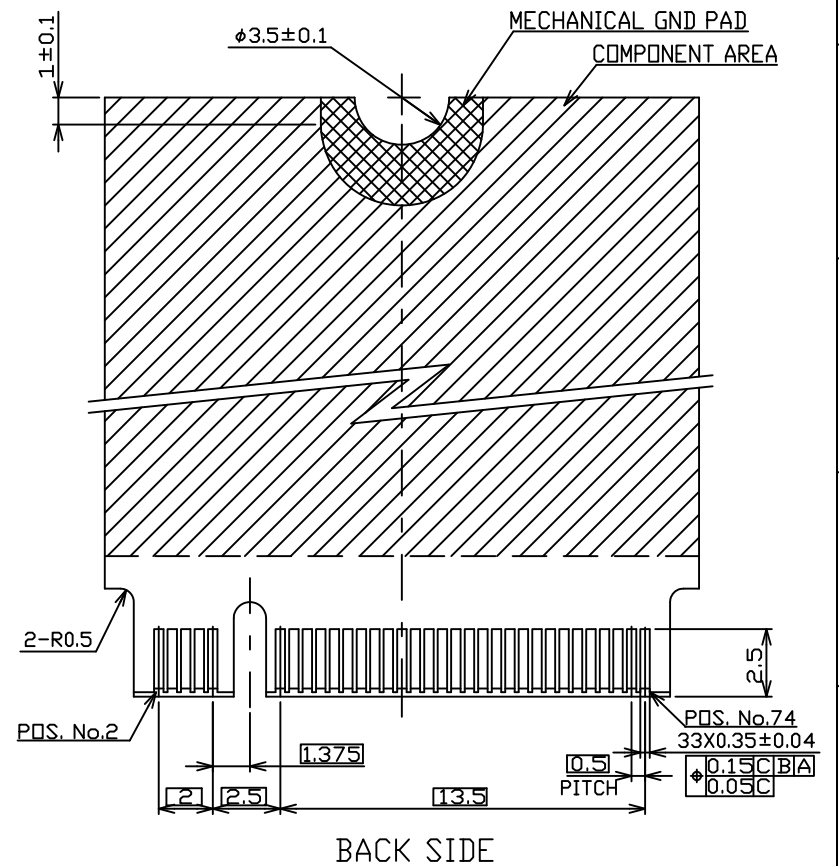
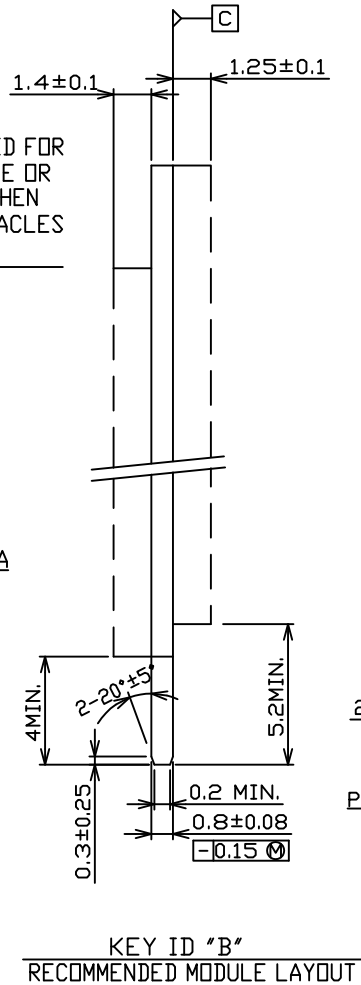
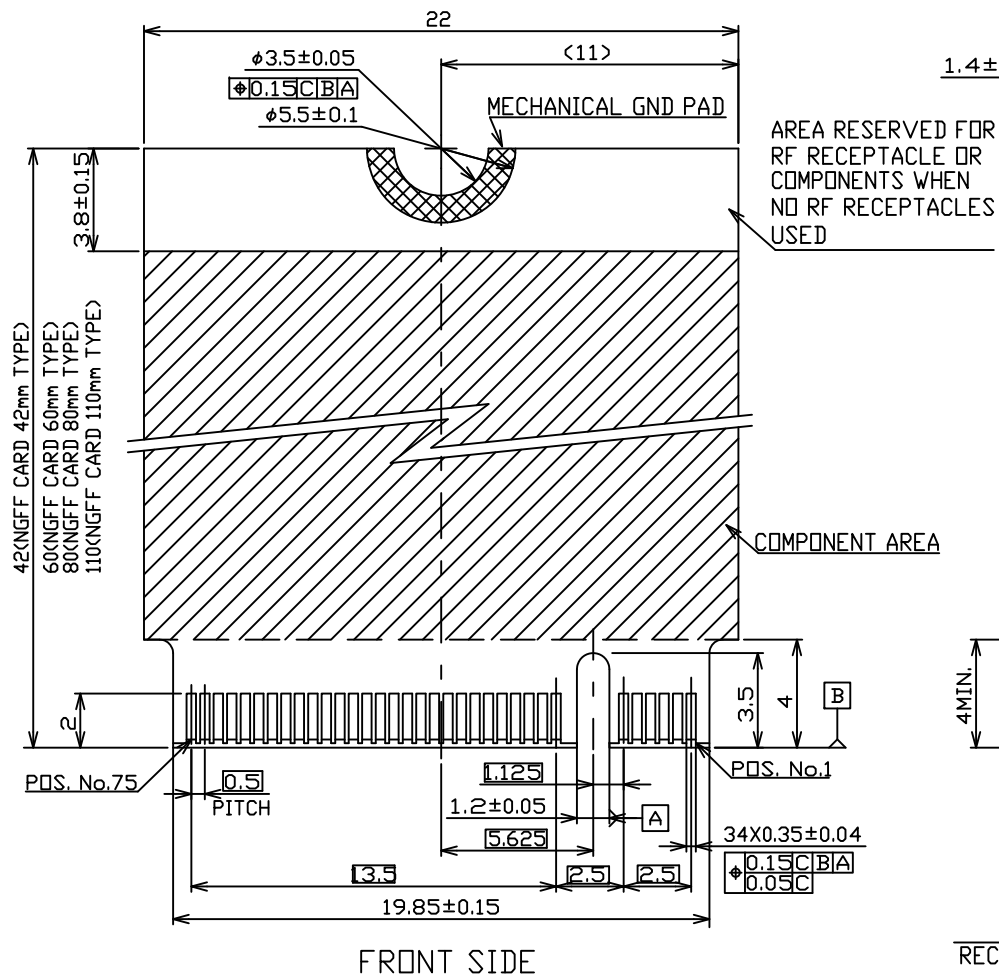


KEY ID "B"
RECOMMENDED P.C.BOARD LAYOUT

						UNLESS OTHERWISE SPECIFIED TOLERANCE			 www.attend.com.tw	
						ANGLES	ANG.	±5°		
						LINEAR	0.	±0.3		
							0.0	±0.25		
						0.00	±0.20			
						SCALE	AS SHOWN	UNIT: mm		
						DRAWN	Willis	2013/12/09	DRAWN NAME:	
						CHECKED	Angel	2013/12/09	M.2 Connector Key B H:4.2mm	
						APPROVED	Ken	2013/12/09	PRODUCT NO.	123A-42BA0-R01
REV.	DESCRIPTION	DATE	REV.	DESCRIPTION	DATE	 SIZE A4 REV. 1.0		FILE NAME	123A-42BA0-R01_B_1	
1										

 Revise:
 Revise:
 Revise:

A



REV.	DESCRIPTION	DATE	REV.	DESCRIPTION	DATE	SIZE	REV.	FILE NAME
1			4			A4	1.0	123A-42BA0-R01_B_1

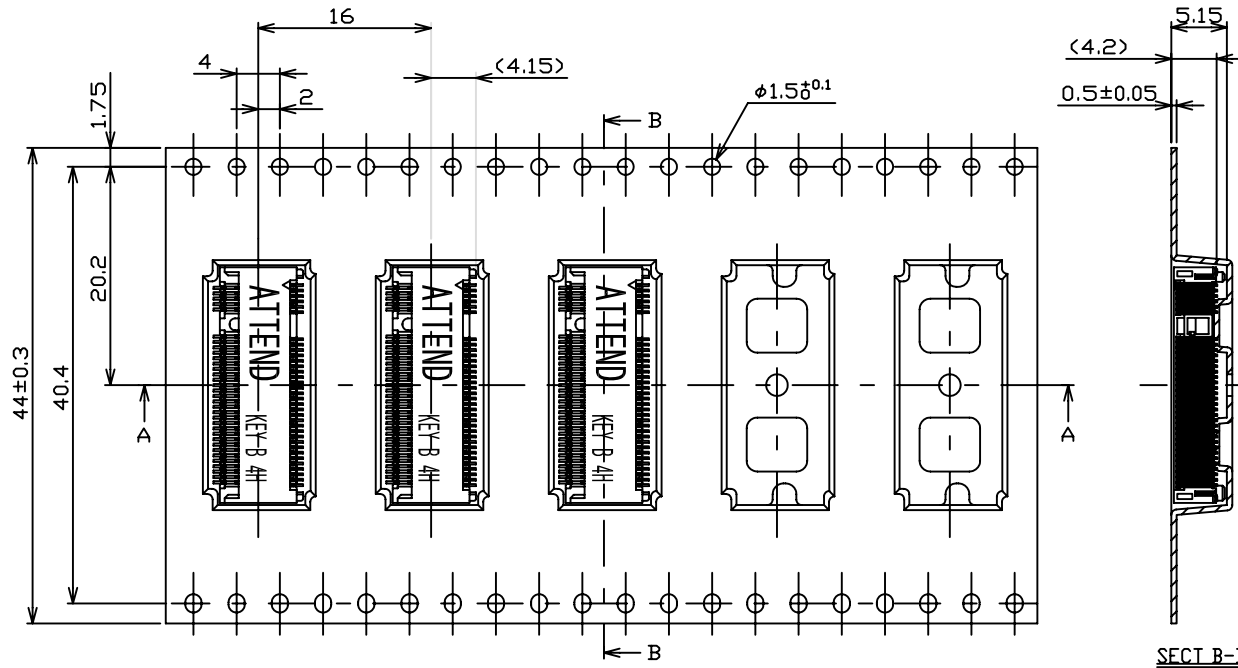
UNLESS OTHERWISE SPECIFIED TOLERANCE			ATTEND	
ANGLES	ANG.	±5°	www.attend.com.tw	
LINEAR	0.	±0.3		
	0.0	±0.25		
	0.00	±0.20		
SCALE	AS SHOWN	UNIT: mm	DRAWN NAME: M.2 Connector Key B H:4.2mm	
DRAWN	Willis	2013/12/09	PRODUCT NO.	123A-42BA0-R01
CHECKED	Angel	2013/12/09	FILE NAME	123A-42BA0-R01_B_1
APPROVED	Ken	2013/12/09		

- △ Revise:
- △ Revise:
- △ Revise:

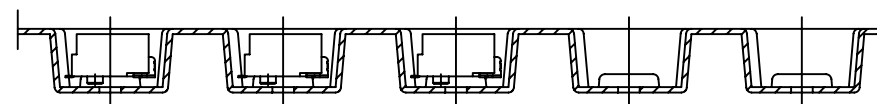
DIRECTION OF TOP OF REEL

NOTES:

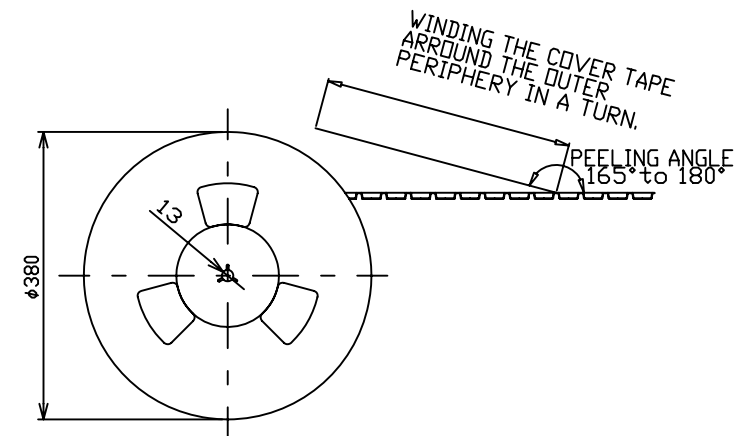
1. THE DIRECTION OF EACH CONNECTOR ON A EMOSS IS REFERED TO THIS DRAWING.
2. GENERAL TOLERANCE : ± 0.5 , $\pm 3^\circ$
3. PACKAGED IN EMOSS TAPE AND PLASTIC REEL 1000 PCS PRE REEL.




SECT B-B



SECT A-A



				UNLESS OTHERWISE SPECIFIED TOLERANCE			 www.attend.com.tw	
				ANGLES	ANG.	$\pm 5^\circ$		
				LINEAR	0.	± 0.3	DRAWN NAME: M.2 Connector Key B H: 4.2mm	
					0.0	± 0.25		
				0.00	± 0.20	DRAWN: Willis 2013/12/09		
				SCALE	AS SHOWN		UNIT: mm	
				CHECKED	Angel	2013/12/09	PRODUCT NO. 123A-42BA0-R01	
				APPROVED	Ken	2013/12/09		
				REV.	1.0	FILE NAME	123A-42BA0-R01_D_1	
REV.	DESCRIPTION	DATE	REV.	DESCRIPTION	DATE	SIZE A4	REV. 1.0	
1								
2								
3								
4								
5								
6								
7								
8								
9								
10								

A

A

A

A

A

A