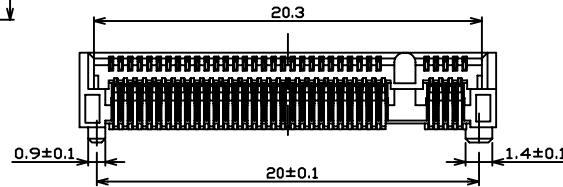
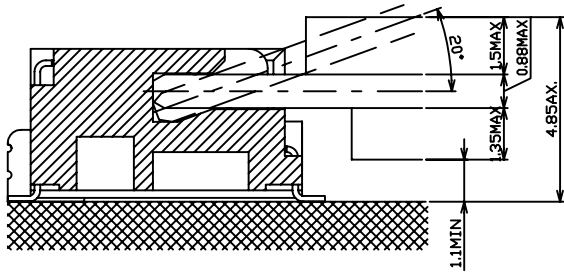
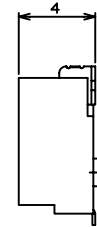
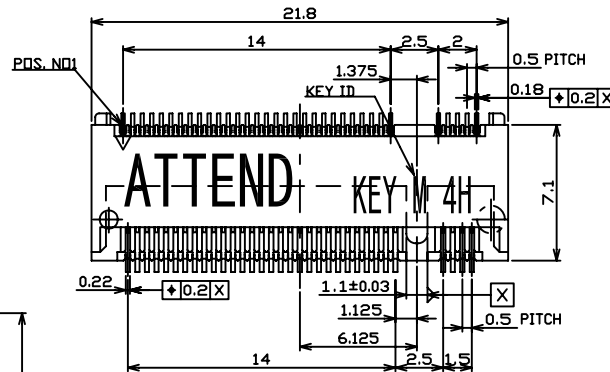
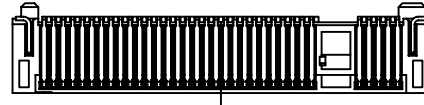
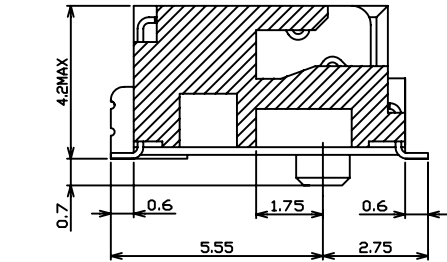


1	2	3	4	5	6	7	8	9	10
SWITCH CIRCUIT			MATERIAL AND FINISH AS BELOW						
WHEN CARD IS EJECTED		WHEN CARD IS INSERTED		A	Housing	LCP UL94V-0, Black	E		
				B	Contact	Phosphor Bronze C5210, Contact Area:Gold Flash Over Nickel	F		
				C	Holddown	Brass C2680, Tin Plated	G		
				D			H		



### SPECIFICATION:

#### 1. ELECTRICAL

- 1.1 Current Rating: 0.5A per pin
- 1.2 Voltage Rating: 50V DC
- 1.3 Contact Resistance: 55mΩ Max
- 1.4 Insulation Resistance: 500MΩ Min
- 1.5 Dielectric Withstanding Voltage: 300VAC

#### 2. MECHANICAL

- 2.1 Durability: 200 Cycle
- 2.2 Insertion Force: 20N max.
- 2.3 Extraction Force: 25N max.

#### 3. ENVIRONMENTAL

- 3.1 Operating temperature range: -40°C~+85°C
- 3.2 Storage temperature range: -40°C~+85°C

#### 4. SOLDER ABILITY


- 4.1 Recommended IR Reflow Temperature: 260°C 10Sec
- 4.2 Recommended PCB Thickness: 1.0mm

P1	P2	P3	P4	P5	P6	P7	P8	P9	P10	P11	P12
----	----	----	----	----	----	----	----	----	-----	-----	-----

#### PIN ASSIGNMENT

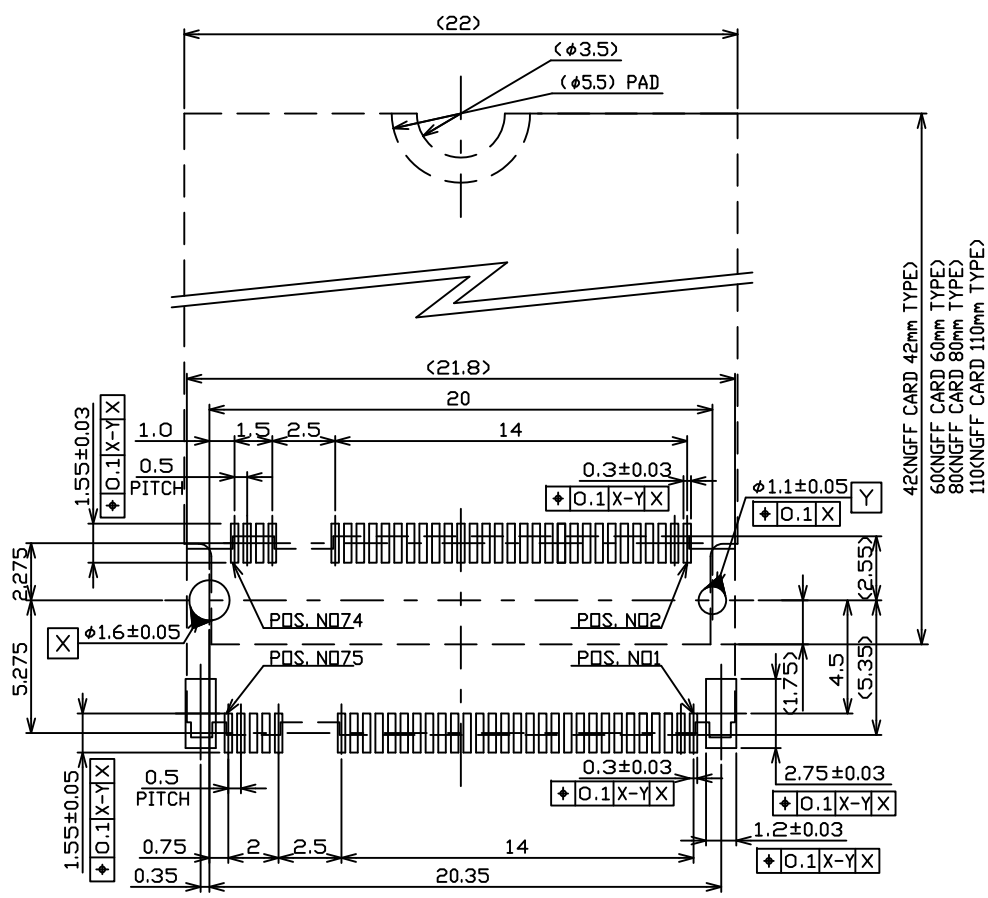
123A-42MA0-R01	M.2 Connector, Key M Type Pitch:0.50mm H:4.2mm, Contact Area:Gold Flash
----------------	---

PRODUCT NO.	DESCRIPTION
-------------	-------------

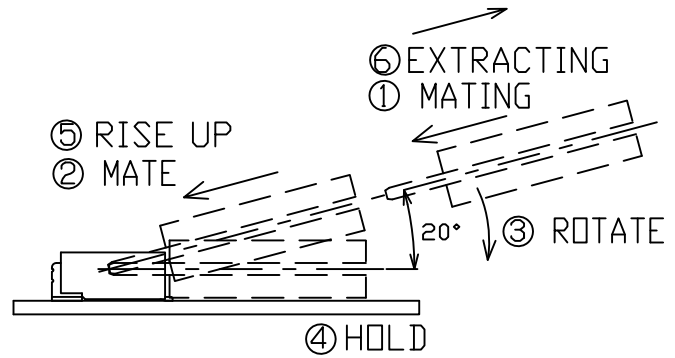
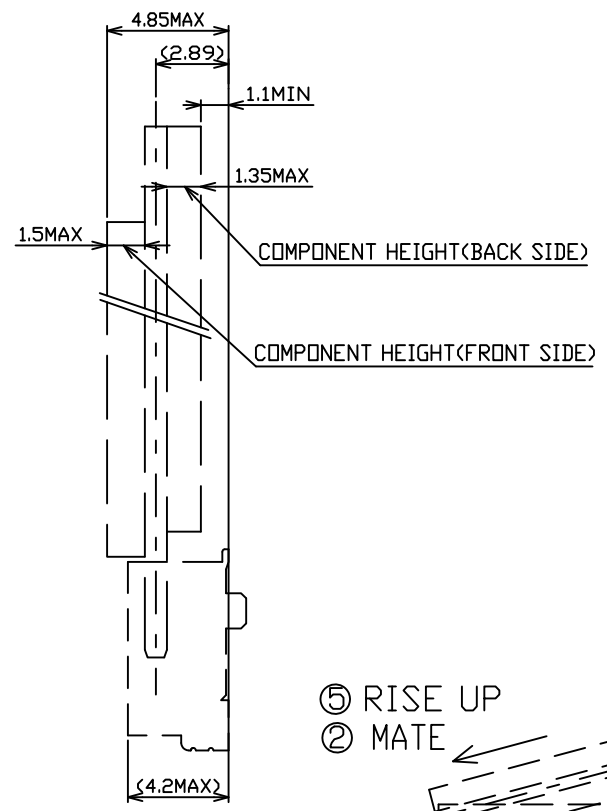
UNLESS OTHERWISE SPECIFIED TOLERANCE			 www.attend.com.tw
ANGLES	ANG.	±5°	
LINEAR	0.	±0.3	
	0.0	±0.25	
	0.00	±0.20	
SCALE	AS SHOWN	UNIT: mm	
DRAWN	Willis	2013/12/09	DRAWN NAME: M.2 Connector Key M H:4.2mm
CHECKED	Angel	2013/12/09	
APPROVED	Ken	2013/12/09	PRODUCT NO. 123A-42MA0-R01
REV. 1.0	FILE NAME 123A-42MA0-R01_B_1	SIZE A4	

REV.	DESCRIPTION	DATE	REV.	DESCRIPTION	DATE
1			4		
2			5		
3			6		
1			7		
2			8		
3			9		
1			10		

- 3 Revise:
- 2 Revise:
- 1 Revise:



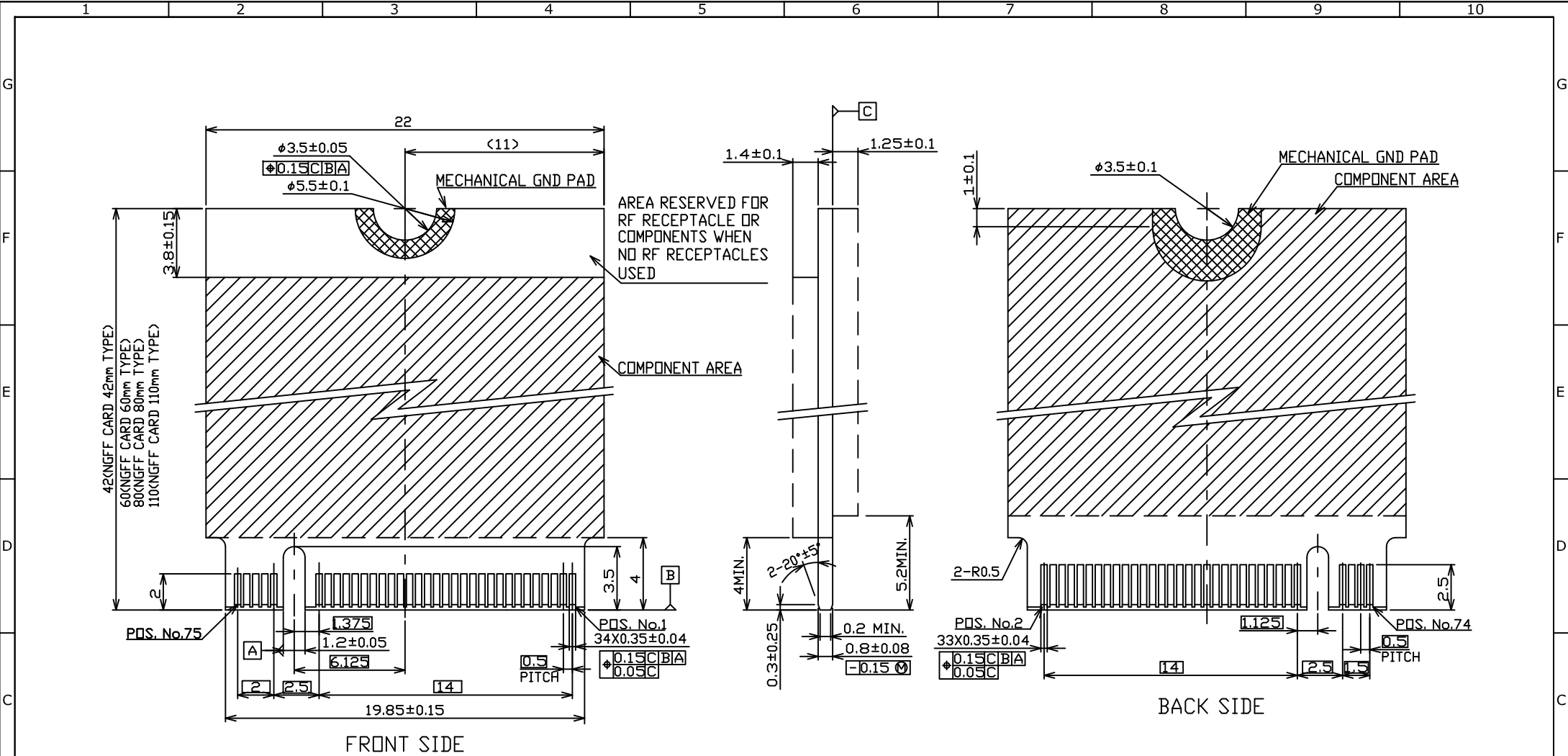
KEY ID "M"  
RECOMMENDED P.C.BOARD LAYOUT



REV.	DESCRIPTION	DATE	REV.	DESCRIPTION	DATE	UNLESS OTHERWISE SPECIFIED TOLERANCE			www.attend.com.tw	
						ANGLES	ANG.	±5°		
							0.	±0.3		
						LINEAR	0.0	±0.25		
							0.00	±0.20		
						SCALE	AS SHOWN	UNIT: mm		
						DRAWN	Willis	2013/12/09	DRAWN NAME:	
						CHECKED	Angel	2013/12/09	M.2 Connector Key M H:4.2mm	
						APPROVED	Ken	2013/12/09	PRODUCT NO.	123A-42MA0-R01
									FILE NAME	123A-42MA0-R01_B_1
							SIZE	A4	REV.	1.0

3  
2  
1

A



REV.	DESCRIPTION	DATE	REV.	DESCRIPTION	DATE	SIZE	REV.	FILE NAME
1						A4	1.0	123A-42MA0-R01_B_1

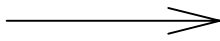
UNLESS OTHERWISE SPECIFIED TOLERANCE		
ANGLES	ANG.	±5°
LINEAR	0.	±0.3
	0.0	±0.25
	0.00	±0.20
SCALE	AS SHOWN	UNIT: mm
DRAWN	Willis	2013/12/09
CHECKED	Angel	2013/12/09
APPROVED	Ken	2013/12/09

		www.attend.com.tw	
		DRAWN NAME: M.2 Connector Key M H:4.2mm	
PRODUCT NO.	123A-42MA0-R01	FILE NAME	123A-42MA0-R01_B_1

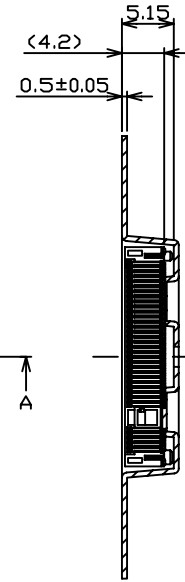
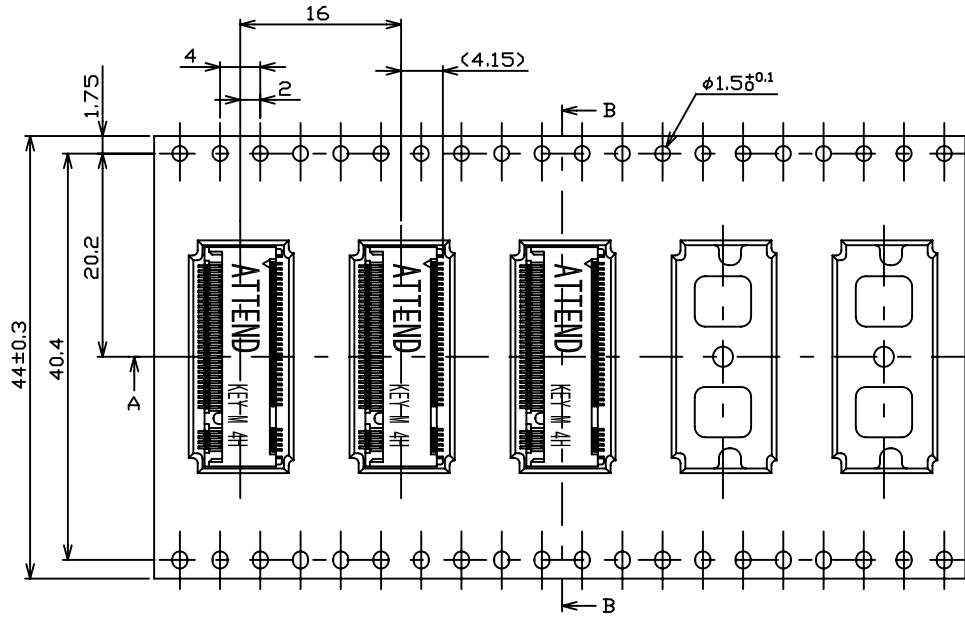
Revise:

DIRECTION OFF TOP OF REEL

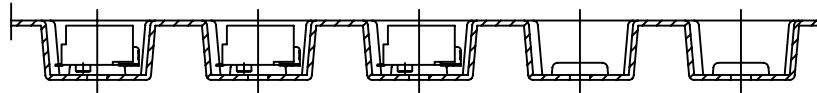


NOTES:

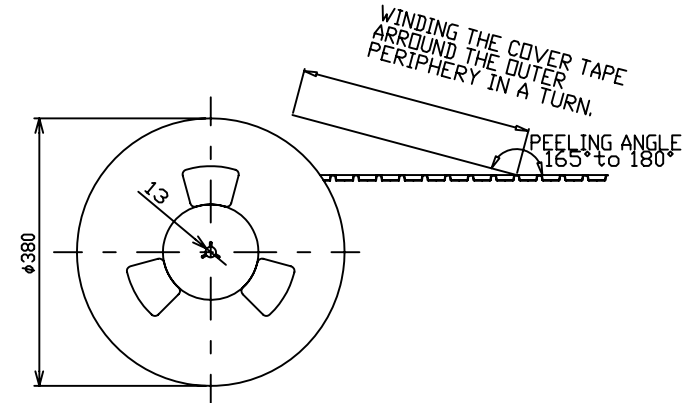
1. THE DIRECTION OF EACH CONNECTOR ON A EMOSS IS REFERED TO THIS DRAWING.
2. GENERAL TOLERANCE :  $\pm 0.5$  ,  $\pm 3^\circ$
3. PACKAGED IN EMOSS TAPE AND PLASTIC REEL 1000 PCS PRE REEL.



SECT B-B



SECT A-A



UNLESS OTHERWISE SPECIFIED TOLERANCE

ANGLES	ANG.	±5°
LINEAR	0.	±0.3
	0.0	±0.25
	0.00	±0.20

SCALE AS SHOWN UNIT: mm

DRAWN	Willis	2013/12/09
CHECKED	Angel	2013/12/09
APPROVED	Ken	2013/12/09



www.attend.com.tw

DRAWN NAME:  
M.2 Connector Key M H:4.2mm

PRODUCT NO. 123A-42MA0-R01

FILE NAME 123A-42MA0-R01\_D\_1

REV.	DESCRIPTION	DATE	REV.	DESCRIPTION	DATE
1					
2					
3					
4					
5					
6					
7					
8					
9					
10					

SIZE A4 REV. 1.0