

Euromas II

Enclosure, ABS



ET 206

Order no.: 63206000

* = Available on request.

Characteristics

Colour of enclosure group

Light grey

Protection class

IP 65

Enclosure Material

ABS, PC (UV stabilised); seal made of CR; for details see Technical Information

Scope of delivery

Lid and base, self-tapping coarse-pitch thread lid screws made of V2A

Note

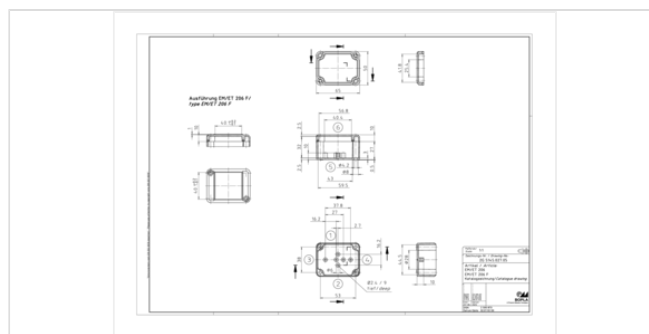
Material shrinkage may result in ABS enclosures being approx. 0.1 - 0.25 % larger.

Dimensions

Dimensions

65 x 50 x 37 mm

Product drawing



Technical documentation / Downloads

Technical drawings

3D product data in STEP format: 63206000 ET-206.stp (977.1 KB)

Drawing for mechanical processing: 63206000 ET-206-G.dxf (715.7 KB)

Milling contours are shown here as a DXF file. (Sub D, USB, HDMI, cable glands, ...)

Product drawing in PDF format: 63206000 ET-206.pdf (61.1 KB)

Product drawing in DXF format: 63206000 ET-206.dxf (628.6 KB)

Product information

20.10.2022

Important!

To compensate for pressure when temperatures change and cause moisture in the enclosure, we recommend that you use a pressure compensation element.

» Additional information

Matching accessories



Rubber feet

22009000 GF

Polyurethane, 65-75 Shore

Black



Mounting panels, laminated paper

22000200 M M 206 EM/ET 206

For EM/ET 206, M/T 206



Wall brackets, screw-on at rear

22010000 EM-WL



Screw covers

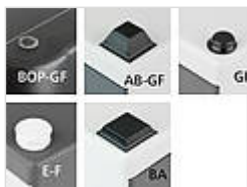
22080000 EM-SA



DIN rail acc. to DIN EN 60715 TH 15

22150501 TS 15.050.1

For EM/ET 206



Universal rubber feet for stability of the enclosures on all surfaces

35800300 BOP-GF

Polyurethane, 65-75 Shore

Transparent



Screws (SHR) and distance bolts (DIBLZ) for mounting bosses in plastic enclosures

59006219 SHR Z KA30x6

SD = 3.0 / ND = 2.4-2.6 / KD = 5.3

