

NOTES:

1. METALSHELLS: STEEL; min. 315µm TIN over 40-80µm NICKEL
2. INSULATORS: PBT GF UL 94 V-0, BLACK
3. CONTACTS: COPPER ALLOY
PLATING: 8µm HARD GOLD over min. 50µm NICKEL
4. CONNECTOR IS PART MARKED: 164A10089X CONEC ABC

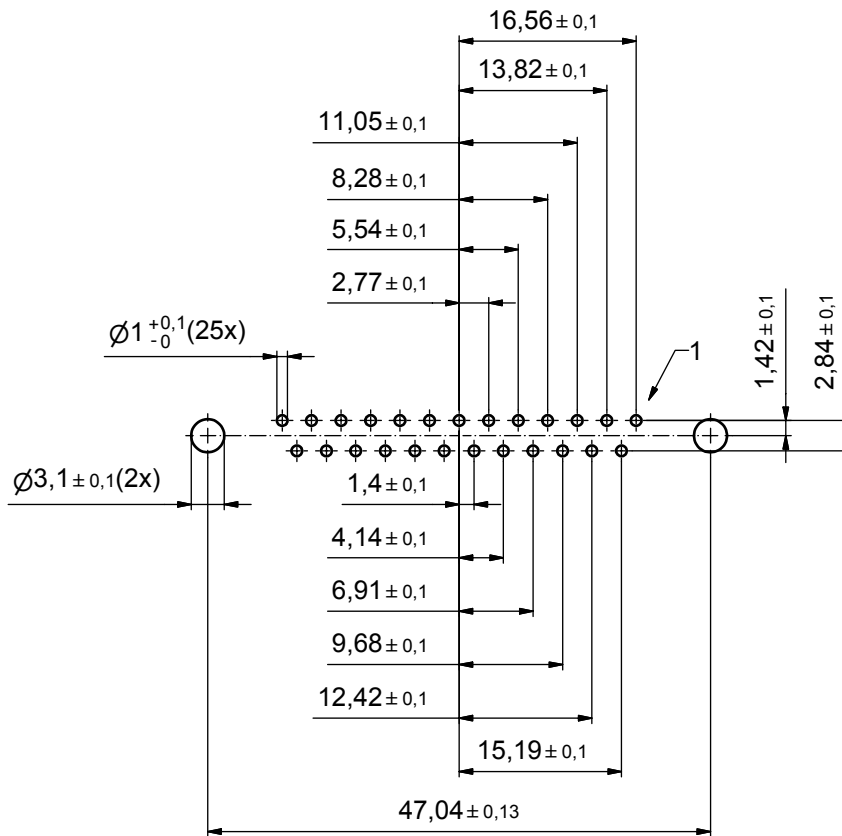
Directive 2002/95/EC
„RoHS“
Compliant

APPROVAL # FREIGABE # DEBLOCAGE # AUTORIZACION # APPROVAL	
CUSTOMER APPROVAL DATE:	
NAME:	TITLE:
COMPANY NAME:	
APPROVAL # FREIGABE # DEBLOCAGE # AUTORIZACION # APPROVAL	

DO NOT ALTER CAD DRAWING BY HAND			
a	Origin		
rev.	description	date	name

tolerance	ISO 2768-m	 dim. in mm	
date	name	scale: 2:1 (5:1)	
drawn 30.05.07	Schmidt	material: see notes	
appd. 31.05.07	Mickenbecker	title:	
norm		D-SUB FEMALE 25pos. SOLDER PIN STRAIGHT	
d-old		dwg no:	Inventor 10
			DIN-A3
			sh: 1
		part no:	164A10089X






APPROVAL # FREIGABE # DEBLOCAGE # AUTORIZACION # APPROVAL	
CUSTOMER APPROVAL DATE:	
NAME:	TITLE:
COMPANY NAME:	
APPROVAL # FREIGABE # DEBLOCAGE # AUTORIZACION # APPROVAL	

THIS DRAWING MAY NOT BE COPIED OR REPRODUCED IN ANY WAY, AND MAY NOT BE PASSED ON TO A THIRD PARTY WITHOUT WRITTEN PERMISSION. OWNERSHIP AND COPYRIGHT OF CONEC GmbH

DO NOT ALTER CAD DRAWING BY HAND

rev.	description	date	name
a	Origin		

tolerance ISO 2768-m		 dim. in mm
date	name	
drawn	30.05.07	Schmidt
appd.	31.05.07	Mickenbecker
norm		
d-old		

scale: 2:1	
material: see sheet 1	
title: P.C.B. HOLE DRILLINGS D-SUB FEMALE 25pos. SOLDER PIN	
dwg no:	Inventor 10
16K1A2079	
part no: see sheet 1	
DIN-A3	sh: 2

