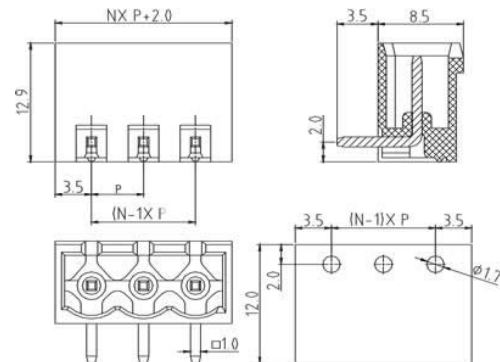
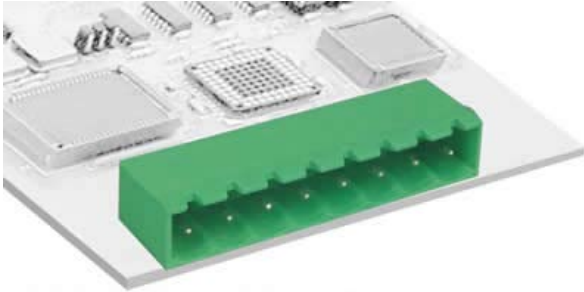
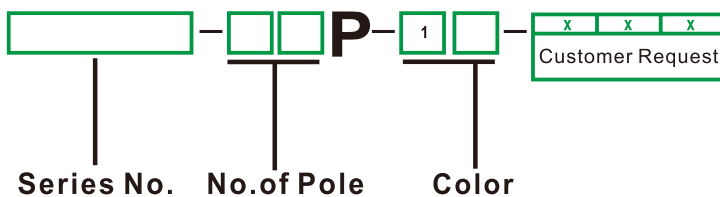


## PLUGGABLE TERMINAL BLOCKS


**EC501R-5.0/5.08**
**Pitch: 5.0mm, 5.08mm**

*N: Number of poles*

Standard	UL	IEC
Rated voltage	300V	320V
Rated current	15A	20A
Withstanding voltage	AC2500V/1Min	
Ambient temperature	-40°C~+105°C	
Pitch	5.0mm(.197") 5.08mm(.200")	
Poles	2P-24P	
Housing	PA66,UL94V-0	
Cage	Brass,Tin plated	

**HOW TO ORDER:**

**Color**

1 Gray	4 Green	7 Trans- parent
2 Blue	5 Orange	8 Yellow
3 Black	6 Red	9 White