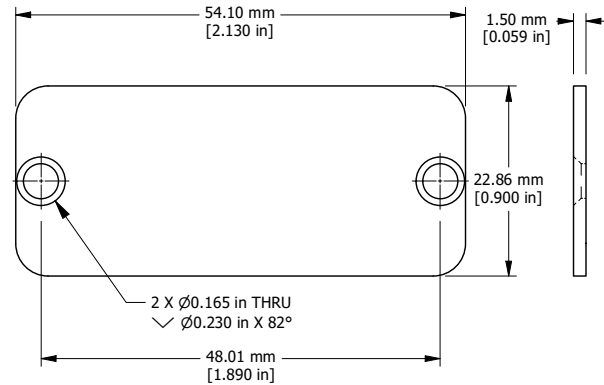
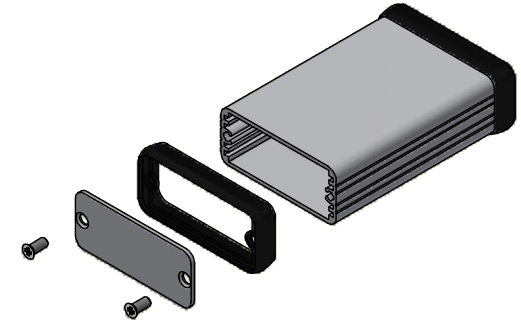


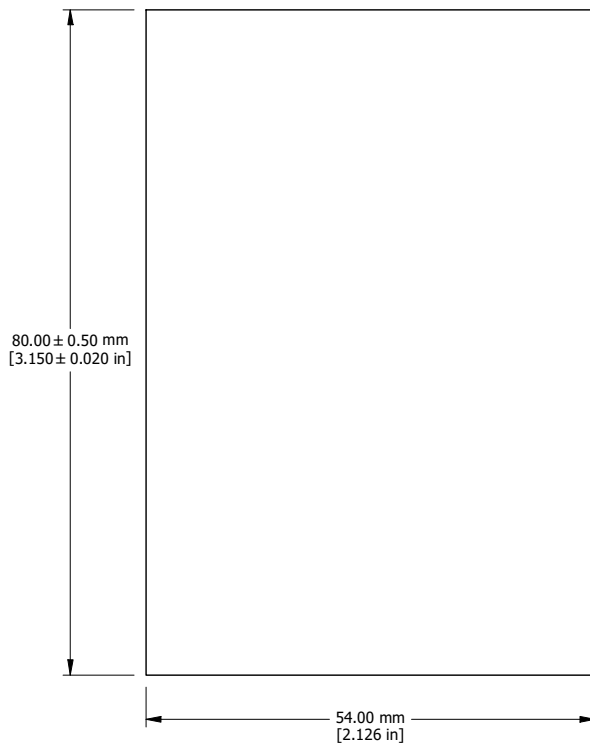
EXTRUSION



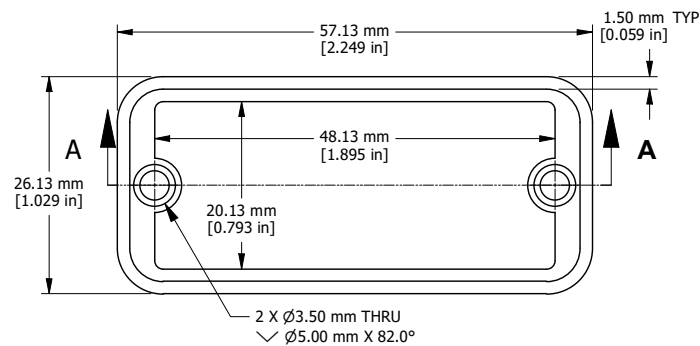
END PLATE



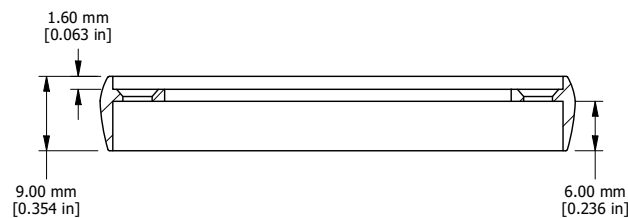
EXPLODED ASSEMBLY VIEW



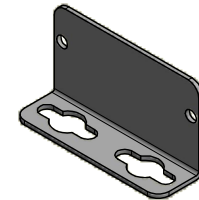
\*\*EXTRUSION DESIGN FOR 50MM WIDE PC BOARD\*\*



OPEN BEZEL



SECTION A-A



OPTIONAL FLANGE END PANELS  
1455CF

Enclosures can be Factory Modified ( Milling, Drilling, Printing etc.)  
Solid models of this enclosure available in STEP or IGES.  
Contact Factory [mjm@hammondmfg.com](mailto:mjm@hammondmfg.com)

NOTE	
Purchased assembly includes box, plastic bezels, end panels, #6 Taptight screws and self adhesive rubber feet.	
Box made from Extruded Aluminum 6063.	
Bezels made with polycarbonate.	

1455C801	
PART NUMBERS	
Clear Anodized	1455C801
Black Anodized	1455C801BK
Blue Anodized	1455C801BU
Red Anodized	1455C801RD
ACCESSORIES	
See website for accessories.	

**HAMMOND  
MANUFACTURING™**

**1455C801**

[www.hammondmfg.com](http://www.hammondmfg.com)