

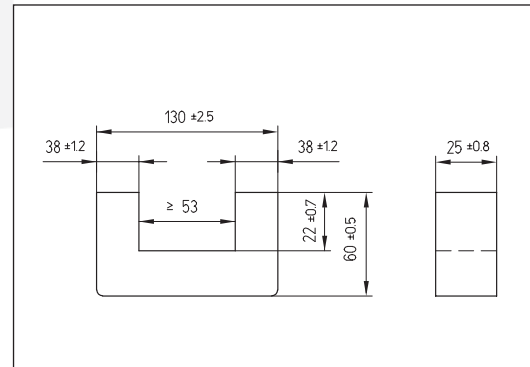
U-Kern U 130/25

U core U 130/25

Magn. Formkenngrößen/Satz

Eff. magn. parameters/set

Formfaktor core factor	$C_1 =$	0,33 mm ⁻¹
Eff. magn. Weglänge eff. magn. path length	$l_e =$	315 mm
Eff. magn. Querschnitt eff. magn. cross section	$A_e =$	950 mm ²
Eff. magn. Volumen eff. magn. volume	$V_e =$	299250 mm ³
Gewicht pro Kern weight per core	$G =$	1500 g



A_L -Wert A_L - value nH	Toleranz tolerance	Werkstoff material	Luftspalt airgap mm	μ_e	Bestellnummer order number
6500	± 25%	K 2004	-	≈ 1700	325 302500 024
6850	± 25%	K 2006	-	≈ 1800	325 302500 026
7500	± 25%	K 2008	-	≈ 1970	325 302500 028

Bei Anwendung in Leistungsübertragern

For application in power transformers

Werkstoff material	Messbedingungen test conditions	Verluste/Satz losses/set
K 2004	25kHz, 100mT, 100°C	≤ 12,6 W
K 2006	25kHz, 100mT, 100°C	≤ 8,5 W
K 2008	25kHz, 100mT, 100°C	≤ 6,0 W

gemessen an zwei U-Kernen / measured on a set of two U cores

All information given without liability. If you require further information about our products, do not hesitate to contact our representatives, or visit our homepage, www.kaschke.de.

Kaschke Components GmbH

Rudolf-Winkel-Straße 6 · 37079 Göttingen · Germany

Fon +49 (0) 5 51-50 58-6 · Fax +49 (0) 5 51-65 75 6

kaschke.de