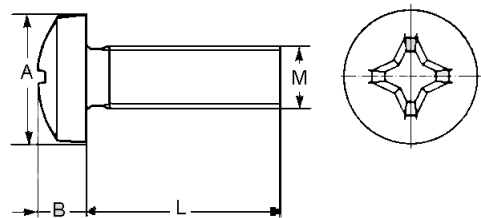


Cross Recessed Screws

Series: SKM With Recessed Cross H Form Thread: M2,5, M3, M4



Features

- Manufactured from steel, quality 4.8, zinc-plated.

Dimensions

Part Nr.	A	B	M	L
	[mm]	[mm]		[mm]
SKM2.5X5	5,0	2,0	M2,5	5
SKM2.5X8	5,0	2,0	M2,5	8
SKM2.5X10	5,0	2,0	M2,5	10
SKM2.5X16	5,0	2,0	M2,5	16
SKM3X6	6,0	2,4	M3	6
SKM3X8	6,0	2,4	M3	8
SKM3X10	6,0	2,4	M3	10
SKM3X12	6,0	2,4	M3	12
SKM3X16	6,0	2,4	M3	16
SKM3X30	6,0	2,4	M3	30
SKM3X40	6,0	2,4	M3	40
SKM4X6	8,0	3,1	M4	6
SKM4X8	8,0	3,1	M4	8
SKM4X10	8,0	3,1	M4	10
SKM4X16	8,0	3,1	M4	16
SKM4X20	8,0	3,1	M4	20
SKM4X30	8,0	3,1	M4	30
SKM4X40	8,0	3,1	M4	40

Manufacturer

Various