

Generic LED Driver Board

General Description

The CL8800DB2 Generic LED Driver Board is provided to aid in the design of an LED lamp using the Supertex CL8800 LED driver. Although the driver board is intended to be plugged into the companion CL8800DB1 Universal LED board, it may be used stand-alone. It also fits inside of a T8 tube.

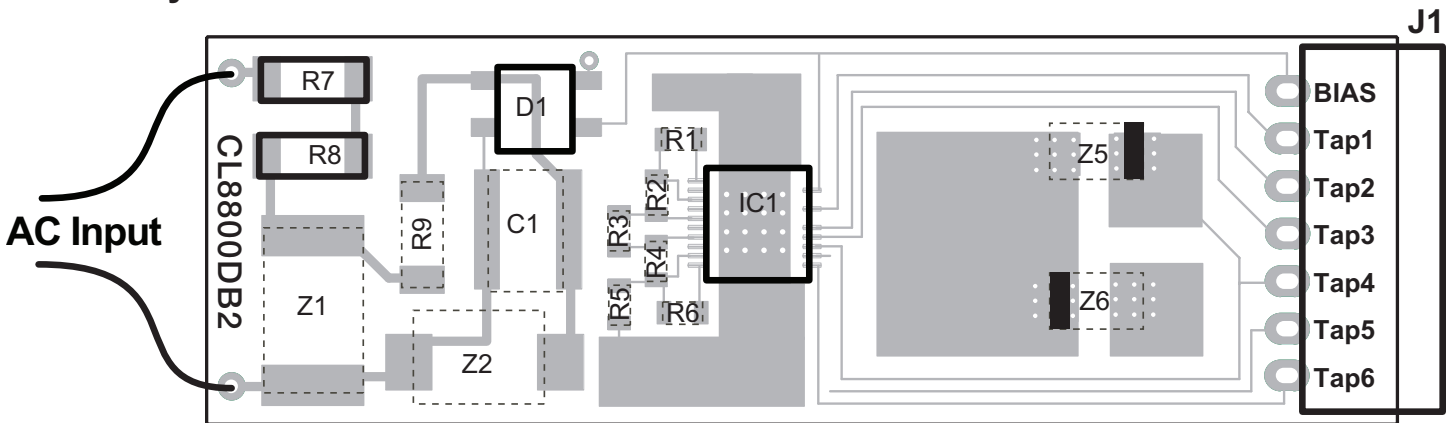
The driver board is provided partially populated so that it may be configured by the user as needed. A kit of transient protection components is provided for 120VAC and 220/230VAC applications.

For help in designing a CL8800DB2 LED driver, please refer to the CL8800 Design Worksheet and Design Guidelines at:

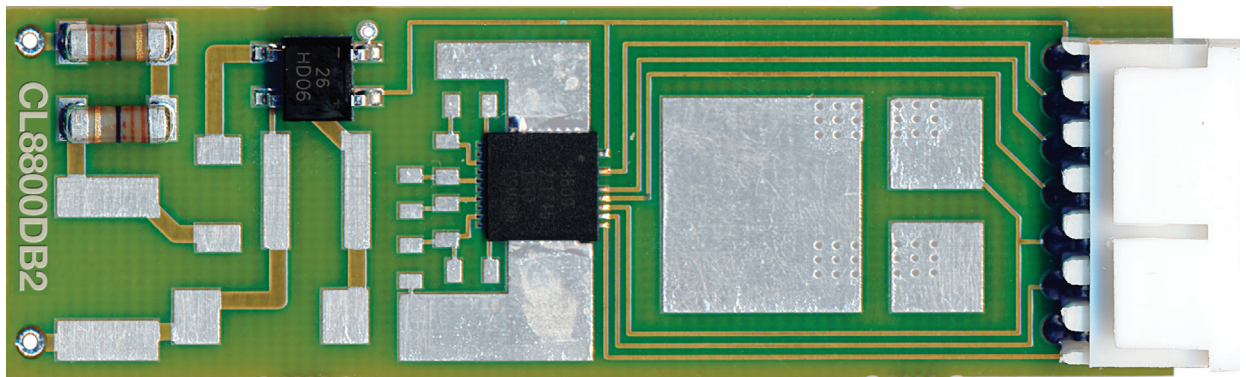
www.supertex.com/pdf/datasheets/CL8800_Design_Worksheet.xls

and www.supertex.com/pdf/misc/CL8800_Design_Guidelines.pdf

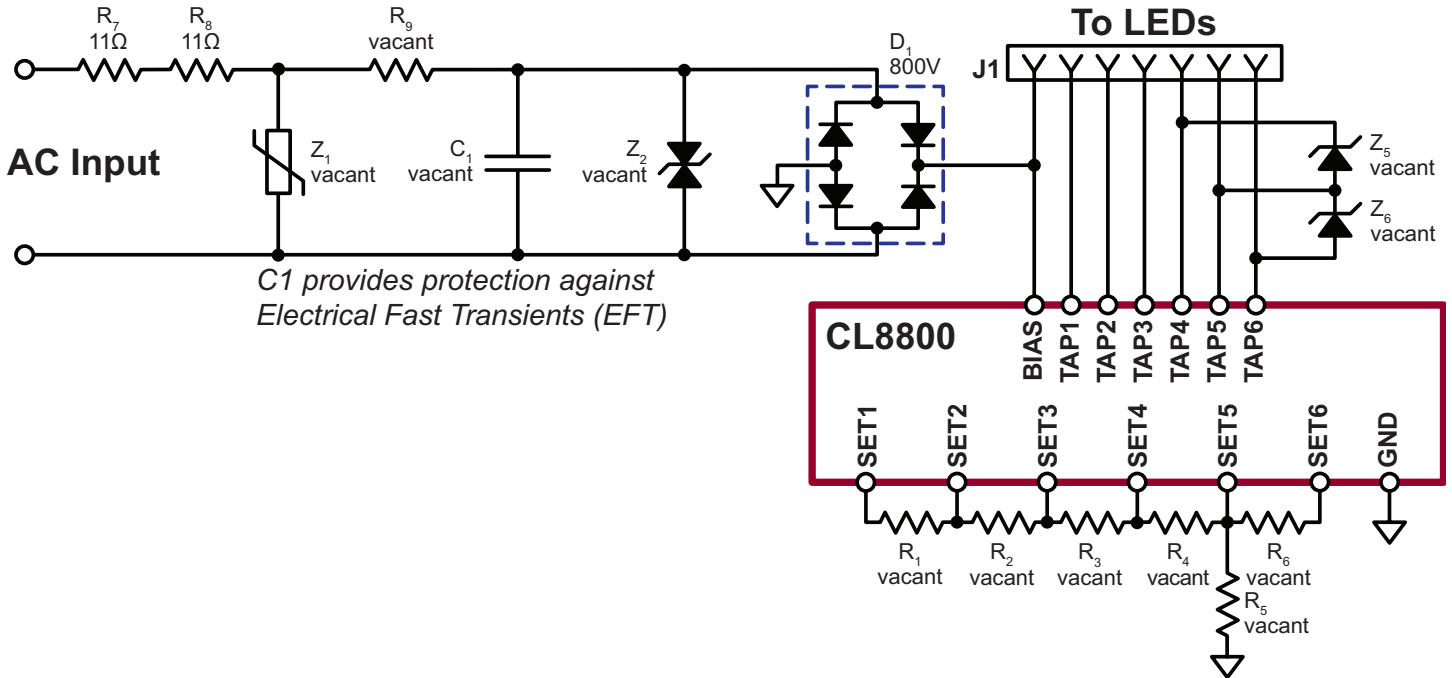
Board Layout



Components with dashed outlines are not installed.



Schematic



CL8800DB2 Component Kit

Designation	Description	120VAC	220/230VAC
Z1	MOV	135VAC	275VAC
Z2	TVS	vacant	275VAC
R9	Resistor	jumper	15Ω
C1 (optional)	Capacitor	10nF, 630V	10nF, 630V

Note: Current-setting resistors R1 - R6 and LED substitution Zeners Z5 and Z6 are to be provided by the user.

Supertex inc. does not recommend the use of its products in life support applications, and will not knowingly sell them for use in such applications unless it receives an adequate "product liability indemnification insurance agreement." **Supertex inc.** does not assume responsibility for use of devices described, and limits its liability to the replacement of the devices determined defective due to workmanship. No responsibility is assumed for possible omissions and inaccuracies. Circuitry and specifications are subject to change without notice. For the latest product specifications refer to the **Supertex inc.** (website: <http://www.supertex.com>)